



YEAR-BY-YEAR RESULTS



1907-08 (1-0)

<i>CAL</i>	<i>OPP</i>
41 Nevada.....	9 W

1908-09 (8-0)

<i>CAL</i>	<i>OPP</i>
41 Watsonville YMCA.....	17 W
39 Pacific.....	28 W
43 Duboce Athletic Club.....	6 W
33 Watsonville YMCA.....	23 W
39 Alameda Wheelmen.....	20 W
48 Rivals.....	16 W
25 Stockton All-Stars.....	12 W
22 Los Angeles YMCA.....	13 W

1911-12 (2-0)

<i>CAL</i>	<i>OPP</i>
32 Stanford.....	16 W
17 Stockton+.....	29 W
+ Forfeit by Stockton	

1912-13 (2-0)

<i>CAL</i>	<i>OPP</i>
28 Stanford.....	15 W
22 Stanford.....	12 W

1913-14 (2-0)

<i>CAL</i>	<i>OPP</i>
32 Stanford.....	12 W
37 Stanford.....	17 W

1914-15 (6-0)

<i>CAL</i>	<i>OPP</i>
31 San Francisco.....	13 W
39 St. Mary's.....	33 W
39 Pacific.....	14 W
28 Nevada.....	17 W
38 Stanford.....	28 W
35 Stanford.....	22 W

1915-16 (11-5, 5-3/1st PCC) Head Coach: Kilduff

<i>CAL</i>	<i>OPP</i>
23 The Calles.....	30 L
15 Multnomah.....	17 L
17 Oregon State.....	14 W
26 Oregon State.....	20 W
35 Willamette.....	20 W
25 Washington.....	20 W
30 Washington.....	24 W
27 Washington.....	35 L
35 Washington.....	33 W
38 Pacific.....	34 W
27 Nevada.....	25 W
27 Oregon State.....	22 W
20 Oregon State.....	29 L
32 Stanford.....	28 W
26 St. Mary's.....	37 L
46 Stanford.....	26 W

1916-17 (15-1, 5-1/2nd PCC) Head Coach: Ben Cherrington

<i>CAL</i>	<i>OPP</i>
80 San Jose YMCA.....	16 W
79 Asilomar All-Stars.....	8 W
73 Watsonville.....	16 W
39 Los Angeles YMCA.....	16 W
44 Los Angeles YMCA.....	12 W
69 Long Beach YMCA.....	30 W
27 USC.....	15 W
40 Whittier.....	30 W

50 Berkeley High.....	16 W
42 USC.....	18 W
28 Washington State.....	20 W
29 Washington State.....	32 L
20 Stanford.....	14 W
29 Stanford.....	20 W
28 Oregon State.....	24 W
20 Oregon State.....	11 W

1917-18 (8-2)

Head Coach: Walter Christie

<i>CAL</i>	<i>OPP</i>
21 63rd Infantry.....	12 W
24 San Francisco.....	19 W
27 63rd Infantry.....	16 W
13 St. Mary's.....	31 L
39 Pacific.....	12 W
32 UC Davis.....	7 W
18 Stanford.....	22 L
28 Nevada.....	20 W
27 Stanford.....	24 W
26 Stanford.....	17 W

1918-19 (6-3, 2-2/3rd PCC)

Head Coach: William Hollender

<i>CAL</i>	<i>OPP</i>
51 UC Davis.....	6 W
64 Pacific.....	23 W
16 Santa Clara.....	28 L
29 Stanford.....	26 W
42 San Francisco.....	23 W
45 St. Mary's.....	34 W
35 Stanford.....	25 W
37 Oregon.....	39 L
28 Oregon.....	30 L

1919-20 (8-5, 5-5/2nd PCC)

Head Coach: William Hollender

<i>CAL</i>	<i>OPP</i>
33 Pacific.....	16 W
24 Santa Clara.....	14 W
26 St. Mary's.....	25 W
28 Washington State.....	26 W
33 Washington State.....	29 W
26 Oregon.....	29 L
33 Oregon.....	19 W
27 Washington State.....	22 W
27 Washington State.....	31 L
22 Washington.....	17 W
28 Washington.....	29 L
20 Stanford.....	27 L
24 Stanford.....	33 L

1920-21 (15-4, 8-3/t-1st PCC)

Head Coach: E.H. Wright

<i>CAL</i>	<i>OPP</i>
32 Los Angeles YMCA.....	30 W
19 L.A. Athletic Club.....	21 L
43 Men's Club of L.A.....	42 W
47 Redlands.....	18 W
56 Fresno.....	12 W
44 San Francisco.....	25 W
30 Olympians.....	29 W
33 Oregon State.....	16 W
31 Oregon State.....	10 W
33 Washington.....	32 W
20 Washington.....	23 L
36 UCLA.....	28 W
30 Stanford.....	24 W
24 Oregon State.....	19 W
22 Oregon State.....	19 W
46 UCLA.....	29 W
26 USC.....	25 W
25 Stanford.....	30 L
21 Stanford.....	25 L

1921-22

(19-6, 10-4/3rd PCC)
Head Coach: E.H. Wright

<i>CAL</i>	<i>OPP</i>
68 Pomona American Legion.....	16 W
108 Pomona American Legion.....	8 W
L.A. Athletic Club+	
25 L.A. Athletic Club.....	13 W
Fresno YMCA&	
Fresno YMCA&	
47 San Francisco.....	22 W
44 St. Mary's.....	28 W
37 Santa Clara.....	24 W
21 Washington State.....	15 W
24 Washington State.....	26 L
33 Washington.....	34 L
22 Washington.....	28 L
24 Stanford.....	14 W
54 Nevada.....	29 W
37 Washington State.....	18 W
34 Washington State.....	16 W
25 Oregon.....	12 W
30 Oregon.....	22 W
43 USC.....	13 W
36 USC.....	20 W
27 Stanford.....	17 W
18 Olympians.....	28 L
28 USC.....	29 L
46 USC.....	9 W

+ Score unavailable but Cal lost
& Score unavailable but Cal won

1922-23 (12-6, 5-3/1st SD PCC)

Head Coach: E.H. Wright

<i>CAL</i>	<i>OPP</i>
27 American Legion.....	3 W
27 Nevada.....	12 W
22 Nevada.....	12 W
37 Santa Clara.....	21 W
46 San Francisco.....	21 W
29 USC.....	16 W
49 UCLA.....	16 W
19 USC.....	24 L
44 St. Mary's.....	21 W
21 USC.....	24 L
35 USC.....	15 W
27 Olympic Club.....	30 L
26 Stanford.....	23 W
17 Stanford.....	18 L
30 Stanford.....	20 W
33 Stanford.....	17 W
20 Idaho.....	28 L
25 Idaho.....	29 L

1923-24 (14-4, 5-3/1st SD, 1st PCC)

Head Coach: E.H. Wright

<i>CAL</i>	<i>OPP</i>
32 Olympic Club.....	19 W
26 USC.....	27 L
28 USC.....	22 W
29 St. Mary's.....	25 W
61 Alumni.....	23 W
42 Santa Clara.....	21 W
43 Nevada.....	23 W
24 Nevada.....	18 W
38 Arizona.....	30 W
14 Arizona.....	23 L
17 Stanford.....	18 L
26 Stanford.....	25 W
25 USC.....	16 W
25 USC.....	26 L
27 Stanford.....	23 W
26 Stanford.....	23 W
32 Washington.....	31 W
28 Washington.....	25 W



NIBS PRICE

1924-1954
449-294 (.604)

1924-25 (11-4, 3-1/1st SD, 1st PCC)

Head Coach: Nibs Price

<i>CAL</i>	<i>OPP</i>
23 Olympic Club.....	27 L
21 San Francisco.....	11 W
26 UC Davis.....	10 W
24 St. Mary's+.....	23 W
23 Santa Clara.....	13 W
27 Nevada.....	28 L
28 Nevada.....	21 W
33 UCLA.....	24 W
17 at Stanford.....	13 W
22 Stanford+ (OT).....	18 W
15 at Stanford.....	16 L
17 Stanford+.....	16 L
25 Oregon State&.....	32 L
32 Oregon State&.....	17 W
33 Oregon State&.....	19 W

+ at Oakland Auditorium
& PCC playoff game at Corvallis

1925-26 (14-0, 5-0/1st SD, 1st PCC)

Head Coach: Nibs Price

<i>CAL</i>	<i>OPP</i>
37 San Francisco.....	17 W
37 USC+.....	17 W
32 USC+.....	12 W
53 Santa Clara.....	13 W
27 St. Mary's+.....	12 W
33 UC Davis.....	13 W
18 at Stanford.....	17 W
26 Nevada.....	20 W
29 Nevada.....	10 W
23 at USC.....	16 W
21 at UCLA.....	8 W
24 Stanford+.....	16 W
32 Oregon&.....	17 W
29 Oregon&.....	23 W

+ at Oakland Auditorium
& PCC playoff game at Oakland Auditorium

1926-27 (13-0, 5-0/1st SD, 1st PCC)

Head Coach: Nibs Price

<i>CAL</i>	<i>OPP</i>
29 San Francisco.....	18 W
43 Pacific.....	15 W
26 St. Mary's+.....	14 W
34 Olympic Club.....	24 W
32 UC Davis.....	21 W
34 Santa Clara.....	12 W
31 USC+.....	28 W
30 at USC.....	19 W
27 at USC.....	22 W
32 Stanford+.....	24 W





29 at Stanford	19 W
36 Oregon&	29 W
31 Oregon&	20 W
+ at Oakland Auditorium	
& PCC playoff game at Eugene	

1927-28
(9-6, 6-3/1st SD PCC)
Head Coach: Nibs Price

CAL	OPP
56 Waseda (Japan)	13 W
19 San Francisco	30 L
46 UC Davis	26 W
13 Santa Clara	28 L
30 St. Mary's+	28 W
21 Olympic Club	29 L
31 at USC	42 L
28 USC+	18 W
29 USC+	39 L
35 at UCLA	34 W
36 at UCLA	48 L
33 UCLA+	25 W
31 Stanford&	25 W
29 Stanford&	12 W
28 Stanford&	17 W
+ at Oakland Auditorium	
& at Kezar, San Francisco, CA	

1928-29
(17-3, 9-0/1st SD, 1st PCC)
Head Coach: Nibs Price

CAL	OPP
34 at Auburn Cubs	26 W
33 Kansas+	21 W
30 Kansas+	23 W
23 Kansas+	24 L
56 Athens Club	25 W
43 at USC	38 W
33 at USC	27 W
26 UCLA+	21 W
35 UCLA+	31 W
29 St. Mary's+	24 W
41 Stanford+	23 W
22 San Francisco	34 L
43 USC+	16 W
26 Santa Clara	32 L
19 at Stanford	17 W
42 Olympic Club	28 W
47 at UCLA	31 W
27 Stanford+	18 W
43 at Washington	31 W
30 at Washington	27 W
+ at Oakland Auditorium	

1929-30
(9-8, 6-3/2nd SD PCC)
Head Coach: Nibs Price

CAL	OPP
25 at Kansas	36 L
15 at Kansas	31 L
28 at Kansas	38 L
28 USC+	30 L
27 USC+	19 W
32 Olympic Club+	25 W
23 UCLA+	26 L
36 St. Mary's+	34 W
36 at Stanford	30 W
31 Santa Clara+	33 L
22 at USC	24 L
31 Athens Club	35 L
32 at UCLA	29 W
32 at UCLA	30 W
34 San Francisco+	19 W
38 Stanford+	31 W
41 at Stanford	25 W
+ at Oakland Auditorium	
Primary Starters	
F - Kent Pursell, 6-2, Sr., 9.2	
F - Wilson Tripp, 6-1, Sr., 7.1	
C - Perry Ten Eyck, 6-3, Sr., 5.4 (Capt.)	
G - Joel Coffield, 6-0, Jr., 3.1	
G - Carl Vendt, 6-2, So., 1.7	

1930-31
(12-10, 6-3/1st SD PCC)
Head Coach: Nibs Price

CAL	OPP
25 Oregon State+	26 L
28 at Nevada	21 W
26 at Nevada	27 L
28 at Stockton Amblers	22 W
37 Montana	23 W
24 USC+	22 W
19 Olympic Club+	31 L
26 at UCLA	24 W
29 St. Mary's+	26 W
32 Stanford+	37 L
23 Santa Clara+	42 L
29 at USC	32 L
21 at USC	23 L
20 San Francisco&	19 W
43 UCLA	39 W
30 UCLA	28 W
18 Athens Club+	36 L
37 at Stanford	34 W
46 Stanford+	32 W
25 at Washington	41 L
36 at Washington	34 W
30 at Washington	42 L

+ at Oakland Auditorium
& at Kezar, San Francisco, CA
Primary Starters
F - Joe Kintana, 6-0, Jr., 6.1
F - Bill Davis, 6-0, Sr., 4.3
C - Jack Read, 6-3, So., 5.9
G - Joel Coffield, 6-0, Sr., 3.8 (Capt.)
G - Carl Vendt, 6-2, Jr., 1.9

1931-32
(16-8, 8-3/1st SD, 1st PCC)
Head Coach: Nibs Price

CAL	OPP
27 at Oregon State	22 W
38 Athens Club+	28 W
20 Young Men's Institute&	37 L
14 at USC	22 L
25 at USC	29 L
28 at L.A. Athletic Club	33 L
29 at UCLA	18 W
26 at UCLA	25 W
26 Olympic Club&	36 L
41 UC Davis	28 W
25 at Stanford	19 W
19 Santa Clara	25 L
27 USC+	18 W
27 USC+	28 L
17 at San Francisco	21 L
34 UCLA+	28 W
31 UCLA+	29 W
32 St. Mary's+	30 W
33 Stanford+	16 W
30 Athens Club	28 W
29 at Stanford	18 W
26 USC+	22 W
22 Washington+	21 W
36 Washington+	24 W

+ at Oakland Auditorium
& at Kezar, San Francisco, CA
Primary Starters
F-Joe Kintana, 6-0, Sr., 7.3
F-Harold Eifert, 5-11, So., 4.8
C-Jack Read, 6-3, Jr., 4.6
G-Carl Vendt, 6-2, Sr., 1.9
G-John Crowley, 5-10, Jr., 2.5

1932-33
(18-7, 8-3/2nd SD PCC)
Head Coach: Nibs Price

CAL	OPP
51 Athens Club	18 W
32 Olympic Club	23 W
32 at Young Men's Institute	35 L
54 at Chico State	32 W
49 at Auburn Cubs	15 W

37 at Pacific	18 W
30 at United A.C.	48 L
17 Santa Clara	32 L
26 Nevada	23 W
33 Witchita Henrys+	34 L
40 UCLA	37 W
33 UCLA	29 W
45 UC Davis	9 W
37 Stanford	22 W
26 at USC	32 L
29 at USC	31 L
37 St. Mary's	23 W
28 at Stanford	18 W
41 San Jose State	27 W
37 at UCLA	28 W
37 at UCLA	36 W
36 San Francisco	29 W
27 USC	28 L
29 USC	24 W
41 Stanford	23 W

+ at Kezar, San Francisco, CA

1933-34
(19-7, 8-4/2nd SD PCC)
Head Coach: Nibs Price

CAL	OPP
26 Young Men's Institute+	23 W
35 St. Mary's	30 W
59 Athens Club+	43 W
34 St. Mary's	27 W
48 Santa Clara+	26 W
15 Santa Clara+	28 L
49 Utah State+	31 W
43 Utah+	32 W
20 U.A.C.+	30 L
36 USC	30 W
19 USC	42 L
31 San Francisco	26 W
43 at Stanford	34 W
42 St. Mary's	25 W
46 UCLA	31 W
29 UCLA	28 W
32 Olympic Club	43 L
51 UC Davis	15 W
42 Stanford	25 W
34 at USC	41 L
37 at USC	28 W
46 Santa Clara	25 W
42 at UCLA	30 W
38 at UCLA	40 L
20 Stanford	34 L
43 at Stanford	15 W

+ at San Francisco Auditorium
Primary Starters
F-Harold Eifert, 6-0, Sr., 252 pts. (Capt.)
F-Gregory Englehard, 6-1, Sr., 160 pts.
C-Dave Meek, 6-4, Jr., 167 pts.
G-Stephen McGaffey, 5-11, Sr., 77 pts.
G-Raymond Olson, 6-0, So., 53 pts.

1934-35
(11-14, 5-7/2nd SD PCC)
Head Coach: Nibs Price

CAL	OPP
39 St. Mary's	48 L
28 Santa Clara+	35 L
33 Athens Club	30 W
21 Santa Clara+	28 L
21 Young Men's Institute+	24 L
41 Olympic Club+	37 W
35 at San Francisco	30 W
42 St. Mary's	34 W
24 at UCLA	35 L
38 at UCLA	26 W
45 UC Davis	18 W
45 Stanford	31 W
46 Santa Clara	17 W
38 USC	41 L
33 USC	44 L
34 Olympic Club	43 L
37 at Stanford	31 W
48 St. Mary's	51 L

37 UCLA	39 L
38 UCLA	21 W
30 San Francisco	41 L
34 at Stanford	38 L
32 at USC	60 L
26 at USC	36 L
50 Stanford	43 W

+ at San Francisco Auditorium

1935-36
(13-16, 6-6/3rd SD PCC)
Head Coach: Nibs Price

CAL	OPP
49 at Golden State	18 W
30 at Olympic Club	34 L
26 at New York	41 L
49 at Temple	43 W
43 at Purdue	44 L
19 at Northwestern	34 L
17 at Illinois	42 L
28 at Kansas	32 L
18 at Kansas	27 L
32 at Oklahoma City	34 L
33 at Arizona	31 W
29 at USC	51 L
22 at USC	35 L
47 UC Davis	22 W
38 at Stanford	41 L
35 at UCLA	33 W
30 at UCLA	26 W
39 Stanford	35 W
46 Santa Clara	44 W
42 Alumni	28 W
29 USC	27 W
35 USC	41 L
39 San Francisco	40 L
63 Stanford	30 W
30 St. Mary's	29 W
34 UCLA	32 W
28 UCLA	32 L
29 Olympic Club	37 L
26 at Stanford	40 L

1936-37
(17-10, 4-8/3rd SD PCC)
Head Coach: Nibs Price

CAL	OPP
31 Golden State	21 W
54 Oregon	44 W
33 Ohio State	31 W
28 Ohio State	30 L
55 Arizona	22 W
63 at Santa Clara	39 W
28 Olympic Club	21 W
30 St. Mary's	25 W
37 at USC	41 L
34 at USC	35 L
52 UC Davis	27 W
35 Stanford	51 L
46 Santa Clara	44 W
45 Alumni All-Stars	40 W
33 UCLA	27 W
44 UCLA	46 L
37 at Stanford	50 L
33 St. Mary's	32 W
36 USC	38 L
36 USC	31 W
32 Stanford	36 L
32 San Francisco	30 W
27 Olympic Club	37 L
33 at UCLA	37 L
43 at UCLA	31 W
54 Athens Club	37 W
44 at Stanford	31 W

Numbers in parentheses refer to Associated Press rankings at time of game (Cal ranking/opponent ranking).



YEAR-BY-YEAR RESULTS



1937-38 (18-11, 8-4/2nd SD PCC) Head Coach: Nibs Price

CAL	OPP
54 at Santa Clara	41 W
46 at Oregon State	34 W
34 at Washington	43 L
38 at Washington	46 L
32 at Loyola (Chicago)	34 L
34 at Ohio State	27 W
32 at Detroit	28 W
43 at Northwestern	36 W
31 at Michigan State	29 W
41 at Creighton	35 W
32 at Nebraska	38 L
39 at UCLA	37 W
32 at UCLA	27 W
57 UC Davis	30 W
47 Stanford	44 W
23 Santa Clara	37 L
54 Alumni	55 L
33 USC	25 W
39 USC	37 W
34 Athens Club	36 L
33 at Stanford	62 L
40 St. Mary's	27 W
32 UCLA	21 W
41 UCLA	22 W
39 at Stanford	41 L
53 Olympic Club	32 W
49 at USC	40 W
27 at USC	60 L
42 Stanford	63 L

1938-39 (24-8, 9-3/t-1st SD PCC) Head Coach: Nibs Price

CAL	OPP
28 at Santa Clara	31 L
44 Idaho	29 W
45 St. Mary's+	33 W
48 Bradley Tech	36 W
43 Nebraska	46 L
49 Ohio State	35 W
58 Nebraska&	30 W
45 Ohio State&	42 W
42 Utah State	35 W
40 Athens Club	27 W
54 at UCLA	39 W
49 at UCLA	33 W
43 Mexico	36 W
52 at UC Davis	35 W
45 at Stanford	29 W
54 San Francisco State	37 W
34 at USC	38 L
36 at USC	34 W
48 St. Mary's	33 W
43 Santa Clara	28 W
36 Alumni	35 W
43 Stanford	25 W
46 Olympic Club	48 L
54 UCLA	32 W
42 UCLA	22 W
42 USC	39 W
42 USC	46 L
35 Stanford	39 L
43 Stanford	32 W
42 USC	36 W
49 at Oregon	54 L
47 at Oregon	53 L

+ at Sacramento
& at Los Angeles

1939-40 (15-17, 5-7/3rd SD PCC) Head Coach: Nibs Price

CAL	OPP
41 Michigan State	37 W
39 at Bradley Tech	40 L
43 at Columbia	36 W
34 at Pennsylvania	37 L

42 at Dartmouth	30 W
47 at Marshall College	51 L
45 at Ohio State	49 L
32 at Nebraska	46 L
33 at Utah State	43 L
39 at Utah	41 L
36 at USC	49 L
49 at USC	56 L
36 at San Diego State	34 W
32 at Stanford	55 L
29 St. Mary's+	41 L
61 UC Davis	29 W
36 Santa Clara	24 W
54 St. Mary's	41 W
41 Alumni	30 W
39 UCLA	33 W
32 UCLA	34 L
33 San Francisco	28 W
38 Stanford	36 W
37 at Santa Clara	44 L
48 Athens Club	49 L
38 USC	30 W
33 USC	49 L
38 Olympic Club	29 W
48 at UCLA	26 W
33 at UCLA	35 L
33 Stanford	35 L
31 at Stanford	27 W

+ at Sacramento

1940-41 (15-12, 6-6/3rd SD PCC) Head Coach: Nibs Price

CAL	OPP
39 Indiana	42 L
30 Nebraska	24 W
47 Utah State	43 W
29 Utah	38 L
44 Bradley Tech	27 W
J04 28 San Diego State	29 L
J10 37 St. Mary's+	28 W
J11 36 San Francisco	32 W
32 at Santa Clara	42 L
J17 42 at UCLA	32 W
J18 33 at UCLA	35 L
47 at San Francisco	34 W
J24 31 Stanford	35 L
J25 47 Santa Clara	42 W
J28 49 St. Mary's	39 W
J31 40 USC (OT)	34 W
F01 35 USC	26 W
F04 41 UC Davis	30 W
F07 42 at Stanford	49 L
F08 41 Olympic Club	42 L
F11 33 Athens Club	53 L
F14 54 UCLA	32 W
F15 30 UCLA	28 W
F21 36 at USC	51 L
F22 47 at USC	57 L
F28 40 Stanford	29 W
M01 36 at Stanford	49 L

+ at Sacramento

1941-42 (11-19, 4-8/3rd SD PCC) Head Coach: Nibs Price

CAL	OPP
D22 34 Missouri	37 L
D23 34 Bradley Tech	46 L
D27 50 Ohio State	38 W
D29 30 Athens Club	27 W
D31 31 Loyola (Chicago)	35 L
J02 55 Santa Clara+	57 L
J03 35 Golden State	44 L
J06 34 St. Mary's+	38 L
J08 35 St. Mary's	39 L
J10 44 Santa Clara+	36 W
J12 26 at San Diego State	27 L
J16 46 at USC	58 L
J17 41 at USC	36 W
J20 32 Golden State	34 L
35 at Stanford	51 L

J23 53 Santa Clara	33 W
53 at San Francisco	43 W
J29 35 Olympic Club	40 L
J30 35 St. Mary's	39 L
F03 58 UC Davis	23 W
F06 54 at UCLA	50 W
F07 34 at UCLA	50 L
F13 36 Stanford	38 L
F14 36 San Francisco	25 W
F20 37 USC	59 L
F21 43 USC	34 W
F27 32 UCLA	33 L
F28 51 UCLA	43 W
M06 49 at Stanford	59 L
M07 30 Stanford	32 L

+ at San Francisco, CA

1942-43 (9-15, 1-7/4th SD PCC) Head Coach: Nibs Price

CAL	OPP
50 UC Davis	20 W
39 Navy Pre-Flight	45 L
37 Alameda Coast Guard	43 L
42 Oakland Naval Reserve	32 W
59 Santa Clara	31 W
35 Navy Pre-Flight+	53 L
45 St. Mary's+	42 W
36 at San Francisco	43 L
49 San Francisco	28 W
32 at USC	39 L
40 at UCLA	49 L
27 USC	32 L
33 Stanford	32 W
44 Santa Clara	36 W
34 at Stanford	36 L
30 St. Mary's	36 L
29 at San Francisco	35 L
29 Santa Clara+	36 L
36 St. Mary's	35 W
23 Alameda Coast Guard	35 L
40 Olympic Club	32 W
40 UCLA	42 L
45 Stanford	53 L
43 at Stanford	48 L

+ at San Francisco, CA

1943-44 (7-3, 4-0/1st SD PCC) Head Coach: Nibs Price

CAL	OPP
71 San Francisco State	28 W
33 Livermore NAS	32 W
36 Coast Guard	35 W
36 St. Mary's Pre-Flight	57 L
J08 37 Coast Guard	51 L
J15 26 USC	24 W
J22 26 Pacific	30 L
J29 36 at UCLA	27 W
F05 36 UCLA	24 W
F12 37 at USC	34 W

Primary Starters

F-John Higgins, 6-0, Sr., 6.1
F-Dick Henderson, 6-3, Sr., 7.1
C-Jim Smith, 6-4, Fr., 8.5
G-Wayne Hooper, 6-0, Sr., 8.5
G-Claude Hiskey, 6-0, Sr., 8.1

1944-45 (7-8, 1-3/3rd SD PCC) Head Coach: Nibs Price

CAL	OPP
D02 33 Alameda NAS	37 L
D08 57 Livermore NAS	37 W
D09 40 Coast Guard Pilots	31 W
D15 44 Camp Park Seabees	28 W
D16 35 Alameda Coast Guard	40 L
D29 39 Navy Seahawks	16 W
D30 39 Treasure Island Navy	44 L
J05 42 Moffett Field	33 W
J06 34 St. Mary's Pre-Flight	44 L
J13 26 UCLA	37 L

J20 25 at USC	52 L
J26 41 Alameda Coast Guard	55 L
J27 54 Pacific	33 W
F03 50 USC	34 W
F10 44 at UCLA	50 L

Primary Starters

F-Gus Mota, 6-1, Sr., 11.3
F-George Clyne, 5-11, So., 8.7
C-Jim Farrell, 6-4, Jr., 6.7
G-Bob Hogeboom, 6-0, So., 3.4
G-Jack Lerond, 6-1, So., 1.6

1945-46 (30-6, 11-1/1st PCC, 4th NCAA) Head Coach: Nibs Price

CAL	OPP
43 Navy	39 W
30 San Francisco Marines	21 W
32 Alameda NAS	27 W
72 Fort Mason	15 W
53 USS Rescue	17 W
D01 51 St. Mary's Pre-Flight	38 W
D04 71 San Francisco State	25 W
D07 26 Alameda NAS	30 L
D08 57 Navy	46 W
D11 58 Moffett Field	40 W
D14 43 Pacific	26 W
D15 44 Treasure Island	29 W
D18 49 Olympic Club	47 W
D28 35 at Nevada+	31 W
D29 31 Utah+	43 L
J04 45 UCLA	33 W
J05 37 UCLA	35 W
J11 47 at Stanford	36 W
J12 47 Stanford	28 W
J18 47 at USC	41 W
J19 51 at USC	55 L
J22 37 St. Mary's	14 W
J25 38 San Francisco	32 W
J26 56 Santa Clara	42 W
F01 50 at UCLA	37 W
F02 49 at UCLA	25 W
F08 42 USC	35 W
F09 51 USC	35 W
F15 42 Stanford	31 W
F16 53 at Stanford	37 W
M08 52 Idaho	37 W
M09 23 Idaho	28 L
M11 55 Idaho	36 W
50 Colorado&	44 W
35 Oklahoma State&	52 L
45 Ohio State	63 L

+ at Nevada Invitational
& Western Area Championships,
Kansas City, MO
□ NCAA Championships, New York, NY

Primary Starters

F-Andy Wolfe, 6-1, So., 13.4
F-Merv LaFaille, 6-0, Sr., 8.3 (Capt.)
C-Jim Smith, 6-5, So., 7.6
G-Bob Hogeboom, 6-1, Jr., 5.8
G-Jim Wray, 5-11, Jr., N/A

1946-47 (20-11, 8-4/2nd SD PCC) Head Coach: Nibs Price

CAL	OPP
N27 51 at Sacramento Senators	45 W
N30 39 Oakland Bitters	47 L
D01 76 Olympic Club	32 W
69 Hawaiian All-Stars	31 W
D06 39 Santa Clara	49 L
D07 65 St. Mary's	38 W
55 San Francisco AC	36 W
D13 52 San Francisco State	23 W
D14 64 Pacific	34 W
D20 36 Illinois	58 L
D21 53 Illinois	35 W
D27 57 Ohio State	47 W
D28 48 Ohio State	32 W
31 San Francisco	34 L
J03 55 Dartmouth	46 W

Cal History





J04	48	Dartmouth	35	W
J10	42	USC	38	W
J11	53	USC	47	W
J17	47	Stanford	46	W
J18	48	at Stanford	36	W
J24	45	UCLA	52	L
J25	62	UCLA	46	W
F06	45	at Oakland Bittners	49	L
F07	51	St. Mary's	53	L
F08	42	Santa Clara	49	L
F14	52	at UCLA	85	L
F15	59	at UCLA	72	L
F21	54	at USC	59	L
F22	55	at USC	45	W
F28	46	at Stanford	40	W
M01	88	Stanford	48	W

Primary Starters
 F-Jack Rocker, 6-4, Sr., 9.4
 F-Andy Wolfe, 6-1, Jr., 8.7
 C-Chuck Hanger, 6-5, Jr., 10.1
 G-Bill Durkee, 6-3, Sr., 6.8
 G-Bob Hogeboom, 6-0, Sr., 4.4 (Capt.)

**1947-48
(25-9, 11-1/1st SD PCC)
Head Coach: Nibs Price**

CAL	OPP		
N25	47 at Sacramento Senators	51	L
N29	66 San Francisco State	42	W
D05	55 at San Francisco	44	W
D06	57 Pacific	43	W
D09	67 Olympic Club	31	W
D12	41 Oakland Bittners	50	L
D13	58 UC Davis	42	W
D19	73 Wisconsin	61	W
D20	59 Wisconsin	44	W
D22	68 Baylor	57	W
D26	58 Minnesota	60	L
D27	59 Minnesota	35	W
D29	60 at Oregon State	55	W
D30	47 at Oregon State	63	L
J02	51 at Washington	54	L
J03	42 at Washington	59	L
J09	58 at UCLA	49	W
J10	53 at USC	40	W
J16	40 at Stanford	34	W
J17	50 Stanford	46	W
J23	51 Santa Clara+	47	W
J24	70 St. Mary's+	53	W
F07	77 at Oakland Bittners	56	W
F13	48 USC	47	W
F14	62 UCLA	44	W
F20	53 at USC	50	W
F21	44 at UCLA	39	W
F27	41 UCLA	37	W
F28	58 USC	34	W
M05	45 Stanford	38	W
M06	45 at Stanford	49	L
M12	64 Washington&	51	W
M13	57 Washington&	64	L
M15	49 Washington&	59	L

Primary Starters
 F-Chuck Hanger, 6-5, Sr., 14.5
 F-George Walker, 6-2, Jr., 8.1
 C-Jim Smith, 6-5, Sr., 5.3
 G-Andy Wolfe, 6-1, Sr., 12.1 (Capt.)
 G-Earl Strader, 6-1, Sr., 3.1

**1948-49
(14-19, 1-11/4th SD PCC)
Head Coach: Nibs Price**

CAL	OPP		
N26	69 San Francisco State	56	W
N27	41 at Oakland Bittners	67	L
D03	50 Santa Clara+	40	W
D04	42 St. Mary's+	60	L
D07	47 San Francisco	49	L
D10	49 Stewart Chevrolet	45	W
D11	67 Pacific	49	W
D14	72 Utah State	57	W

D17	50 at Oregon	51	L
D18	58 at Oregon	54	W
D21	60 Ohio State	74	L
D22	64 Ohio State	68	L
D27	73 Washington&	49	W
D28	43 USC&	42	W
D30	56 Stanford&	54	W
J07	52 USC	57	L
J08	54 UCLA	63	L
J14	65 Stanford	66	L
J15	48 at Stanford	55	L
J28	66 Pittsburgh+	49	W
J29	54 Oakland Bittners	61	L
F01	50 Stewart Chevrolet	57	L
F04	58 Santa Clara	40	W
F05	59 St. Mary's	42	W
F08	45 at UC Santa Barbara	44	W
F11	37 at UCLA	49	L
F12	49 at USC	45	W
F18	42 UCLA	45	L
F19	39 USC	48	L
F25	52 at USC (X/19)	72	L
F26	50 at UCLA	59	L
M04	53 at Stanford	56	L
M05	46 Stanford	55	L

Primary Starters
 F-Mike O'Neill, 6-3, So., 11.0
 F-Dave Nichols, 6-0, Jr., 8.0
 C-Billy Hagler, 6-3, So., 9.9
 G-Bob Walker, 6-3, Jr., 9.4 (Capt.)
 G-Bill Thompson, 6-1, So., 3.3

**1949-50
(10-17, 4-8/3rd SD PCC)
Head Coach: Nibs Price**

CAL	OPP		
D02	51 Olympic Club	47	W
D03	50 Alumni	52	L
D09	48 Santa Clara	56	L
D10	46 St. Mary's	39	W
D13	68 Pacific	49	W
D17	53 at Canisius	55	L
D20	50 at New York	69	L
D22	46 at C.C. New York	76	L
D23	67 at Ohio State	78	L
D29	59 Texas A&M+	47	W
D30	45 Minnesota+	47	L
J06	45 at UCLA (X/9)	50	L
J07	45 at USC	61	L
J13	60 at Stanford	55	W
J14	47 Stanford	50	L
J28	56 at San Francisco	44	W
J31	46 Blue and Gold	58	L
F03	39 Stewart Chevrolet	64	L
F04	84 Hawaii	59	W
F10	59 USC	54	W
F11	47 UCLA (X/12)	54	L
F17	34 at USC (X/19)	61	L
F18	56 at UCLA (X/10)	64	L
F24	44 UCLA (X/7)	46	L
F25	60 USC (X/16)	58	W
M03	46 Stanford	58	L
M04	64 at Stanford	55	W

Primary Starters
 F-Billy Hagler, 6-3, Jr., 10.7
 F-Bob Walker, 6-3, Sr., 10.2
 C-Don Henriksen, 6-6, Sr., 9.7
 G-Bob Matheny, 5-11, So., 7.9
 G-Bill Thompson, 6-1, Jr., 2.6

**1950-51
(16-16, 3-9/4th SD PCC)
Head Coach: Nibs Price**

CAL	OPP		
D01	49 Sacramento State	39	W
D02	44 San Francisco	50	L
D08	76 San Francisco State	54	W
D09	55 Alumni	41	W

D11	62 Nebraska+	59	W
D15	52 Washington	57	L
D16	49 Washington	64	L
D19	35 Oklahoma A&M	36	L
D20	86 Baylor	40	W
D22	70 St. Mary's	57	W
D23	46 Oklahoma A&M+	58	L
D26	70 Pittsburgh	58	W
D29	82 Georgia Tech+	57	W
D30	78 Georgia Tech	45	W
J05	49 at USC	61	L
J06	44 at USC	68	L
J12	72 Stanford	42	W
J13	60 at Stanford	64	L
J26	52 Santa Clara	53	L
J27	69 Long Island+	67	W
J30	69 Oldsmobile Rockets&	37	W
J31	61 Universal Motors&	63	L
F02	54 at Hawaii	36	W
F03	79 Service Center&	52	W
F09	62 at UCLA	60	W
F10	56 at UCLA	61	L
F16	55 USC (X/13)	42	W
F17	44 USC (X/13)	49	L
F23	57 UCLA	75	L
F24	59 UCLA	62	L
M02	57 at Stanford	75	L
M03	56 Stanford	57	L

Primary Starters
 F-Larry Horan, 6-3, So., 6.0
 F-John Ricksen, 6-3, So., 6.0
 C-Bill Hagler, 6-3, Sr., 13.3
 G-Bob See, 6-0, Sr., 11.3
 G-Rupe Ricksen, 6-3, So., 3.7

**1951-52
(17-13, 6-6/t-2nd SD PCC)
Head Coach: Nibs Price**

CAL	OPP		
N30	70 San Francisco State	58	W
D01	56 Alumni	46	W
D05	42 at San Francisco	51	L
D07	69 Santa Clara	51	W
D08	55 St. Mary's	50	W
D11	50 Kansas State (X/5)	64	L
D14	50 Washington (X/6)	52	L
D15	43 Washington (X/6)	65	L
D21	59 Oregon State+	61	L
D22	65 Oregon State	53	W
D27	64 Iowa+	69	L
D28	68 Wisconsin+	49	W
J04	65 USC	55	W
J05	43 USC	44	L
J11	74 at Stanford	81	L
J12	72 Stanford	63	W
J18	61 UCLA	59	W
J19	54 UCLA	51	W
	95 Hilo All-Stars&	41	W
	102 Hilo All-Stars&	48	W
	72 at Hawaii	46	W
	54 Universal Motors&	50	W
	73 Universal Motors&	65	W
	48 Military Air Transport&	57	L
F15	65 at USC	64	W
F16	54 at USC	73	L
F22	54 at UCLA	67	L
F23	42 at UCLA	68	L
F29	66 Stanford	52	W
M01	65 at Stanford	70	L

Primary Starters
 F-John Ricksen, 6-3, Jr., 10.1
 F-Larry Horan, 6-4, Jr., 6.2
 C-Bob McKeen, 6-7, Fr., 9.7
 G-Jim Doan, 6.2, Sr., 9.6
 G-Rupe Ricksen, 6-3, Jr., 5.8

**1952-53
(16-10, 9-3/1st SD PCC)
Head Coach: Nibs Price**

CAL	OPP		
D05	79 Alumni	59	W
D06	64 San Francisco	33	W
D12	77 Hawaii	40	W
D13	87 Pacific	30	W
D19	50 at Washington (18/9)	60	L
D20	88 at Washington (18/9)	99	L
D26	57 at Wisconsin	64	L
D27	60 at Iowa	69	L
J02	72 at UCLA	68	W
J03	68 at UCLA	66	W
J09	68 Stanford (20/X)	54	W
J10	60 at Stanford (20/X)	76	L
J16	78 at USC (X/12)	63	W
J17	71 at USC (X/12)	63	W
J30	60 St. Mary's+	55	W
J31	70 Santa Clara+	64	W
F06	62 at Utah (14/X)	61	W
F07	58 at Utah (14/X)	62	L
F13	63 UCLA (19/X)	67	L
F14	70 UCLA (19/X)	62	W
F20	66 USC (19/X)	68	L
F21	71 USC (19/X)	44	W
F27	82 at Stanford	63	W
F28	97 Stanford	63	W
M06	47 Washington& (X/4)	60	L
M07	57 Washington& (X/4)	80	L

Primary Starters
 F-John Ricksen, 6-3, Sr., 10.7 (Capt.)
 F-Bob Albo, 6-4, Jr., 8.9
 C-Bob McKeen, 6-7, So., 17.6
 G-Bob Matheny, 5-11, Jr., 11.9
 G-Rupe Ricksen, 6-3, Sr., 7.7 (Capt.)

**1953-54
(17-7, 6-6/3rd SD PCC)
Head Coach: Nibs Price**

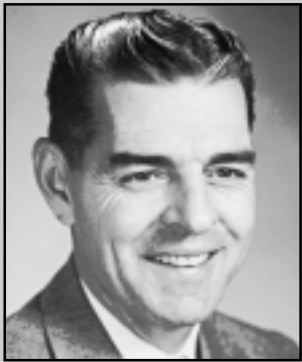
CAL	OPP		
D01	33 at San Francisco	51	L
D05	56 St. Mary's	50	W
D11	56 San Jose State (17/X)	48	W
D12	63 Santa Clara (17/16)	50	W
D18	71 Washington State (15/X)	45	W
D19	61 Washington State (15/X)	49	W
D21	77 Hawaii (15/X)	56	W
D22	73 Hawaii (2 OT)	70	W
D26	90 Pacific	51	W
	61 at Hawaii	51	W
J08	62 UCLA	53	W
J09	73 UCLA	65	W
J15	83 at Stanford	68	W
J16	56 Stanford	50	W
J29	70 Utah (14/X)	53	W
J30	95 Utah (14/X)	63	W
F05	49 USC (15/X)	53	L
F06	46 USC (15/X)	32	W
F12	54 at UCLA (14/X)	82	L
F13	62 at UCLA (14/X)	71	L
F19	36 at USC	56	L
F20	56 at USC	62	L
F26	98 Stanford	80	W
F27	70 at Stanford	80	L

Primary Starters
 F-Bob Albo, 6-4, Sr., 12.0 (Capt.)
 F-Dick Tamberg, 6-5, Sr., 10.8
 C-Bob McKeen, 6-7, Jr., 16.0
 G-Bob Matheny, 5-11, Sr., 13.4 (Capt.)
 G-Frank Hess, 6-0, So., 6.4

Numbers in parentheses refer to Associated Press rankings at time of game (Cal ranking/opponent ranking).



YEAR-BY-YEAR RESULTS



PETE NEWELL

1955-1960
119-44 (.730)

1954-55
(9-16, 1-11/4th SD PCC)
Head Coach: Pete Newell

CAL	OPP
D03 52 at Oregon State	50 W
D04 64 at Oregon	52 W
D10 77 Pacific (OT)	82 L
D11 64 St. Mary's	51 W
D17 57 Colorado	44 W
D18 59 Colorado	46 W
D21 74 Ohio State (X/11)	63 W
D22 54 Ohio State (X/11)	50 W
D28 75 Kansas State+	88 L
D29 65 Kansas+ (X/16)	62 W
D30 62 Colorado+	69 L
J07 56 at USC	63 L
J08 65 at USC	81 L
J14 57 Stanford	59 L
J15 67 at Stanford	75 L
J28 59 Santa Clara&	66 L
J29 62 at San Francisco (X/2)	84 L
F04 64 at UCLA (X/8)	83 L
F05 63 at UCLA (X/8)	84 L
F11 58 USC	57 W
F12 62 USC	80 L
F18 48 UCLA (X/9)	55 L
F19 76 UCLA (X/9)	84 L
F25 84 at Stanford	90 L
F26 68 Stanford	77 L

+at Big Seven Tournament, Kansas City, MO & at Cow Palace, San Francisco, CA

Primary Starters
F-Bob Blake, 6-2, Jr., 9.3
F-Larry Friend, 6-4, So., 12.3
C-Bob McKeen, 6-7, Sr., 19.8 (Capt.)
G-Mike Diaz, 5-11, So., 9.2
G-Frank Hess, 6-2, Jr., 4.3

1955-56
(17-8, 10-6/3rd PCC)
Head Coach: Pete Newell

CAL	OPP
D10 52 St. Mary's	62 L
D16 70 Pacific	57 W
D17 59 Santa Clara	51 W
D19 84 at Arizona	74 W
D21 64 at Arizona State	59 W
D26 78 Dartmouth	59 W
D29 62 Wisconsin	55 W
D30 70 Iowa (X/6)	45 W
J06 52 USC	51 W
J07 64 USC	77 L
J13 62 at Oregon	63 L
J14 67 at Oregon	65 W
J28 24 San Francisco (X/1)	33 L
F03 65 Oregon State (OT)	63 W
F04 69 Oregon State	56 W

F10 54 at Idaho	44 W
F11 67 at Idaho	58 W
F17 87 Washington State	55 W
F18 73 Washington State	59 W
F24 74 Washington	62 W
F25 63 Washington	60 W
M02 80 at UCLA (X/13)	85 L
M03 62 at UCLA (X/13)	84 L
M09 63 Stanford	66 L
M10 68 at Stanford	70 L

Primary Starters
F-Bob Blake, 6-2, Sr., 12.1 (Capt.)
F-Larry Friend, 6-4, Jr., 13.0
C-Duane Asplund, 6-7, Sr., 11.6
G-Earl Robinson, 6-1, So., 11.4
G-Gabe Arrillaga, 6-1, Jr., 3.3

1956-57
(21-5, 14-2/1st PCC)
Head Coach: Pete Newell

CAL	OPP
D01 56 San Francisco	70 L
D07 80 Arizona State	50 W
D15 59 St. Mary's	47 W
D18 56 Kansas (X/1)	66 L
D20 74 at Arizona State	61 W
D22 70 at Arizona	49 W
D27 76 Pacific	49 W
D29 69 San Jose State	47 W
J04 66 at Washington State	58 W
J05 61 at Washington State	51 W
J08 59 Stanford	45 W
J11 53 Oregon	46 W
J12 71 Oregon	57 W
J25 67 at Stanford (19/X)	64 W
F08 73 at Oregon State (19/X)	60 W
F09 62 at Oregon State (19/X)	51 W
F15 91 Idaho (12/X)	54 W
F16 71 Idaho (12/X)	56 W
F22 57 at Washington (15/X)	70 L
F23 72 at Washington (15/X)	62 W
M01 66 UCLA (X/6)	71 L
M02 73 UCLA (X/6)	68 W
M08 61 at USC (14/X)	55 W
M09 89 at USC (14/X)	83 W
M15 86 Brigham Young+ (13/X)	59 W
M16 46 San Francisco+ (13/X)	50 L

+NCAA Western Regionals, Gill Coliseum, Corvallis, OR

Primary Starters
F-Larry Friend, 6-4, Sr., 18.9 (Capt.)
F-Ev McKeen, 6-3, Jr., 4.2
C-Duane Asplund, 6-7, Sr., 11.4
G-Earl Robinson, 6-1, Jr., 12.1
G-Gabe Arrillaga, 6-0, Sr., 3.7

1957-58
(19-9, 12-4/t-1st PCC)
Head Coach: Pete Newell

CAL	OPP
D06 70 San Jose State	62 W
D10 67 St. Mary's (OT)	57 W
D13 54 at San Francisco (X/6)	66 L
D20 44 at Kansas State (X/3)	58 L
D21 52 at Kansas (X/2)	58 L
D26 60 Dayton+	55 W
D28 59 Temple+	69 L
D30 96 New York University+	65 W
J03 43 at Oregon State (19/18)	55 L
J04 57 at Washington (19/X)	45 W
J10 49 Washington	42 W
J11 47 Washington State	32 W
J17 60 at Stanford	45 W
J18 61 Oregon State (X/16)	51 W
F01 54 Santa Clara	45 W
F07 48 at USC	58 L
F08 61 at UCLA	58 W
F15 80 USC	62 W
F17 67 Stanford	59 W
F21 70 at Idaho	62 W
F22 59 at Washington State	48 W
F24 61 at Oregon	60 W

F28 56 UCLA (19/X)	50 W
M01 71 Idaho (19/X)	82 L
M07 62 Oregon	64 L
M10 57 Oregon State&	45 W
M14 54 Idaho State	43 W
M15 62 Seattle (OT) (X/18)	66 L

+ at Holiday Festival, New York, NY
& PCC playoff, Eugene, OR
□ NCAA Western Regionals, San Francisco

Primary Starters
F-Bob Dalton, 6-3, Jr., 9.0
F-George Sterling, 6-4, Sr., 5.8
C-Don McIntosh, 6-6, Sr., 11.7
G-Earl Robinson, 6-1, Sr., 10.0 (Capt.)
G-Al Buch, 6-1, Jr., 9.5

1958-59
(25-4, 14-2/1st PCC)
NCAA CHAMPIONS
Head Coach: Pete Newell

CAL	OPP
D03 60 San Jose State	36 W
D06 50 San Francisco	43 W
D09 57 St. Mary's (X/14)	55 W
D12 65 Kansas State (X/3)	68 L
D20 71 at Iowa (15/X)	52 W
D21 68 at Wisconsin (15/X)	53 W
D23 43 at St. Louis (14/16)	55 L
D27 90 Arizona (14/X)	46 W
J02 54 at Washington (20/X)	43 W
J03 57 at Oregon (20/X)	59 L
J09 55 Washington	44 W
J10 64 Idaho	39 W
J16 53 at Stanford (20/X)	56 L
J17 67 Stanford (20/X)	46 W
J31 66 at Santa Clara (20/X)	55 W
F06 60 at UCLA (19/X)	58 W
F07 82 at USC (19/X)	55 W
F13 83 Oregon (18/X)	55 W
F14 64 UCLA (18/X)	51 W
F20 61 at Washington State (15/X)	37 W
F21 65 at Idaho (15/X)	46 W
F23 57 at Oregon State (15/X)	40 W
F27 70 USC (12/X)	64 W
F28 65 Washington State (12/X)	45 W
M07 55 Oregon State (11/X)	52 W
M13 71 Utah+ (11/18)	53 W
M14 66 St. Mary's+ (11/15)	46 W
M20 64 Cincinnati& (11/5)	58 W
M21 71 West Virginia& (11/10)	70 W

+ NCAA Western Regionals, Cow Palace, San Francisco, CA
& NCAA Championships, Louisville, KY

Primary Starters
F-Bob Dalton, 6-3, Sr., 7.3
F-Jack Grout, 6-5, Sr., 5.5
C-Darrall Imhoff, 6-10, Jr., 11.5
G-Denny Fitzpatrick, 6-0, Sr., 13.3
G-Al Buch, 6-2, Sr., 9.2 (Capt.)

1959-60
(28-2, 11-1/1st AAWU),
NCAA RUNNER-UP
Head Coach: Pete Newell

CAL	OPP
D04 59 at UC Santa Barbara	47 W
D08 65 at San Francisco	40 W
D12 54 San Jose State	43 W
D18 51 Colorado	47 W
D19 79 Colorado	46 W
D23 71 Michigan State (4/11)	60 W
D28 62 Illinois+ (4/10)	48 W
D29 65 USC+ (OT) (3/X)	61 W
D30 65 West Virginia+ (3/2)	45 W
J02 57 at USC (3/X)	65 L
J04 60 at USC (3/X)	45 W
J08 59 UCLA (2/X)	47 W
J09 52 at Stanford (2/X)	43 W
J15 54 Washington State (2/X)	43 W
J16 79 Washington (2/X)	39 W
J29 70 Oregon (3/X)	45 W

J30 67 Oregon State (3/X)	48 W
F05 68 Washington (3/X)	53 W
F12 57 USC (3/X)	46 W
F13 53 UCLA (3/X)	45 W
F20 67 at UCLA (3/X)	57 W
F26 54 at Washington (4/X)	47 W
F27 62 at Oregon State (4/X)	47 W
M04 51 Stanford (3/X)	42 W
M05 70 at Stanford (3/X)	51 W
M08 71 Idaho State& (2/X)	44 W
M11 69 Santa Clara (2/X)	49 W
M12 70 Oregon (2/X)	49 W
M17 77 Cincinnati* (2/1)	69 W
M18 55 Ohio State* (2/3)	75 L

+ at Los Angeles Invitational & NCAA Regionals, San Francisco, CA
□ NCAA Regionals, Seattle, WA
* NCAA Finals, Cow Palace, San Francisco

Primary Starters
F-Tandy Gillis, 6-6, Sr., 9.6
F-Bill McClintock, 6-4, Jr., 11.9
C-Darrall Imhoff, 6-10, Sr., 13.7
G-Earl Schultz, 6-4, Jr., 9.5
G-Bob Wendell, 5-8, Jr., 4.9



RENE HERRERIAS

1961-1968
92-100 (.479)

1960-61
(13-9, 5-7/4th AAWU)
Head Coach: Rene Herrerias

CAL	OPP
D03 60 UC Santa Barbara	54 W
D06 43 San Jose State	39 W
D10 51 St. Mary's	43 W
D16 53 San Francisco	39 W
D19 62 at Northwestern	40 W
D21 53 St. Louis+ (OT) (X/16)	54 L
D22 72 Illinois+	54 W
D28 80 Iowa& (4 OT)	83 L
D29 63 Minnesota&	49 W
D30 40 Stanford&	36 W
J06 50 USC	57 L
J07 57 USC	65 L
J10 52 Stanford	53 L
J14 46 at UCLA (X/10)	54 L
F01 60 Mutual AAU	52 W
F02 52 Serv Pac (Ex.)	39 W
F03 66 Sub Pac (Ex.)	52 W
F04 64 Hawaii Marines (Ex.)	71 L
F10 50 at Washington	70 L
F11 58 at Washington (OT)	59 L
F17 52 at Stanford	50 W
F18 64 Stanford	61 W
F24 66 UCLA	65 W
M03 52 Washington (OT)	51 W
M10 69 at USC (X/7)	57 W
M11 55 at UCLA	59 L

+ at Kentucky Classic, Lexington, KY
& at Los Angeles Invitational, Los Angeles
□ at Hawaii - Ex. not included in official records





Primary Starters

F-Bill McClintock, 6-4, Sr., 15.0 (Capt.)
 F-Dave Stafford, 6-3, Sr., 7.5
 C-Stan Morrison, 6-7, Sr., 10.8
 G-Earl Shultz, Sr., 9.9
 G-Bobby Wendell, 5-8, Sr., 3.6

1961-62 (8-17, 2-10/5th AAWU) Head Coach: Rene Herrerias

CAL	OPP
D02 55 Pacific	44 W
D06 58 St. Mary's	57 W
D09 57 at San Francisco (OT)	59 L
D12 46 Santa Clara	53 L
D15 47 at Colorado	63 L
D16 60 at Colorado	66 L
D18 58 at Utah	64 L
D22 50 Nebraska	49 W
D23 57 St. Louis	55 W
D27 54 Washington State+	61 L
D29 76 Michigan+	67 W
D30 85 Michigan State+	72 W
J05 41 at USC (X/6)	68 L
J06 52 at USC (X/6)	79 L
J12 60 UCLA	71 L
J13 42 at Stanford	74 L
F02 56 Loyola Marymount	68 L
F03 57 Washington	62 L
F09 63 Washington	70 L
F16 51 Stanford	64 L
F17 54 at Stanford	59 L
F23 62 at UCLA	68 L
M03 68 at Washington (OT)	65 W
M09 61 USC	60 W
M10 54 UCLA	66 L

+ at Far West Classic, Portland, OR
Primary Starters
 F-Ed Donahue, 6-5, Sr., 6.1 (Capt.)
 F-Don Lauer, 6-2, Jr., 9.4
 C-Chris Carpenter, 6-8, So., 6.6
 G-Dick Smith, 6-0, Jr., 12.0
 G-Dennis Vollom, 6-3, Jr., 3.3

1962-63 (13-11, 4-8/5th AAWU) Head Coach: Rene Herrerias

CAL	OPP
D01 72 Utah	66 W
D05 77 St. Mary's	63 W
D08 62 San Francisco	57 W
D14 61 at Oregon State (X/9)	59 W
D15 60 at Oregon State (X/9)	70 L
D21 70 Texas	62 W
D22 60 Wyoming	55 W
D27 85 Seattle+ (OT)	77 W
D28 50 Oregon State+	58 L
D29 78 Oregon+	46 W
J04 72 USC	65 W
J05 78 USC	69 W
J08 68 Stanford (2 OT)	70 L
J12 58 at UCLA	63 L
F01 55 Oregon	60 L
F02 79 Oregon	58 W
F08 62 at Washington	64 L
F09 58 at Washington	65 L
F15 61 at Stanford (X/8)	60 W
F16 58 Stanford (X/8)	68 L
F23 57 UCLA	64 L
M01 50 Washington	45 W
M08 63 at USC (OT)	77 L
M09 53 at UCLA	72 L

+ at Far West Classic, Portland, OR
Primary Starters
 F-Don Lauer, 6-2, Sr., 8.8
 F-Chris Carpenter, 6-8, Jr., 3.6
 C-Camden Wall, 6-10, Jr., 13.5
 G-Dick Smith, 6-0, Sr., 14.6 (Capt.)
 G-Bruce Ballmer, 6-2, Jr., 4.5

1963-64 (11-13, 8-7/3rd AAWU) Head Coach: Rene Herrerias

CAL	OPP
D04 65 St. Mary's	50 W
D07 60 at San Francisco	64 L
D13 65 Oregon State (X/9)	55 W
D14 49 Oregon State (X/9)	61 L
D18 58 at Arizona	64 L
D20 78 Michigan State+	68 W
D21 66 Arizona State+	71 L
D26 73 Hawaii Marines& (Ex.)	61 W
D27 71 Hickam Field& (Ex.)	62 W
D28 66 Sub Pac& (Ex.)	73 L
J03 46 at Washington	44 W
J04 53 at Washington	59 L
J10 72 Washington State	64 W
J11 72 Washington State	56 W
J17 65 at USC	64 W
J18 65 at USC	47 W
J31 63 at Oregon	77 L
F01 64 at Oregon	72 L
F07 67 UCLA (X/1)	87 L
F08 56 UCLA (X/1)	58 L
F14 57 Stanford	69 L
F15 59 at Stanford	52 W
F22 57 Washington	51 W
F24 72 at Washington State	70 W
F29 55 USC	77 L
M02 57 at UCLA (X/1)	87 L
M06 59 at Stanford (OT)	61 L

+ at Sun Devil Classic, Tempe, AZ
 & at Honolulu - Ex. not included in official records

Primary Starters
 F-Dan Wolthers, 6-4, Jr., 14.3
 F-Steve Smith, 6-3, So., 5.9
 C-Camden Wall, 6-10, Sr., 11.9
 G-Dan Lufkin, 6-1, Sr., 8.7 (Capt.)
 G-Howard Holt, 6-2, Jr., 5.4

1964-65 (8-15, 4-10/7th AAWU) Head Coach: Rene Herrerias

CAL	OPP
D05 62 St. Mary's	44 W
D11 57 Arizona	55 W
D12 55 San Francisco (X/5)	65 L
D19 74 at Utah	99 L
D21 80 at Nebraska	87 L
D22 59 at Nebraska	63 L
D26 74 Wyoming	75 L
D28 86 Tulane	59 W
J08 46 Washington	55 L
J09 63 Washington State	46 W
J15 54 at UCLA (X/1)	76 L
J16 55 at USC	75 L
J30 80 at Santa Clara	60 W
F05 57 at Oregon State	74 L
F06 71 at Oregon	83 L
F12 72 Oregon	52 W
F13 55 Oregon State	53 W
F19 53 at Washington State	60 L
F20 66 at Washington	64 W
F26 67 USC	68 L
F27 68 UCLA (X/2)	83 L
M05 79 Stanford	86 L
M06 59 at Stanford	72 L

Primary Starters
 F-Dan Wolthers, 6-4, Sr., 17.7 (Capt.)
 F-Dick Vortmann, 6-5, Jr., 4.2
 C-Mike Henderson, 6-6, Sr., 15.1
 G-Robby Olson, 6-1, Jr., 8.4
 G-Howard Holt, 6-2, Sr., 8.0

1965-66 (9-16, 4-10/7th AAWU) Head Coach: Rene Herrerias

CAL	OPP
D03 62 at San Francisco	78 L
D04 55 St. Mary's	52 W

D10 87 Nebraska	71 W
D11 68 Nebraska	70 L
D17 64 Indiana+	71 L
D18 75 Air Force+	70 W
D20 72 at Oklahoma	94 L
D23 73 Santa Clara	75 L
D29 82 Texas&	77 W
D30 58 Arizona&	62 L
J08 71 at Washington State	70 W
J10 79 at Washington	80 L
J14 66 UCLA (X/9)	75 L
J15 58 USC	77 L
J29 64 San Jose State	52 W
F04 62 Oregon State	77 L
F05 63 Oregon	65 L
F11 50 at Oregon State	63 L
F12 51 at Oregon	68 L
F18 71 Washington State	74 L
F19 50 Washington	48 W
F25 79 at UCLA	95 L
F26 60 at USC	58 W
M04 59 Stanford	63 L
M05 88 at Stanford	73 W

+ at Kentucky Tournament, Lexington, KY
 & at American Legion Tournament, Seattle, WA

Primary Starters
 F-Bob Wolfe, 6-5, So., 10.0
 F-Steve Smith, 6-3, Jr., 10.3
 C-Bruce Steckel, 6-7, Jr., 10.8
 G-Russ Critchfield, 5-10, So., 15.5
 G-Charlie Perkins, 6-2, Jr., 7.3

1966-67 (15-10, 6-8/t-5th AAWU) Head Coach: Rene Herrerias

CAL	OPP
D03 74 St. Mary's	55 W
D05108 Oklahoma	81 W
D09 59 San Francisco	51 W
D19 75 Utah	73 W
D21 62 at Iowa	72 L
D23 87 at Illinois (OT)	97 L
D27 69 Notre Dame+	63 W
D28 83 Hawaii+	69 W
D29 60 Sub Pac+ (Ex.)	45 W
J06 42 Oregon State	45 L
J07 74 Oregon	61 W
J13 78 at UCLA (X/1)	96 L
J14 99 at USC (2 OT)	95 W
J26 78 Japanese National Team*	59 W
J28 80 at Santa Clara	77 W
F03 59 Air Force	55 W
F04 63 Denver	58 W
F11 80 at Washington	85 L
F12 67 at Washington State	75 L
F17 81 Washington State	85 L
F18 88 Washington	73 W
F24 62 at Oregon	61 W
F25 57 at Oregon State (OT)	59 L
M03 77 USC	75 W
M04 66 UCLA (X/1)	103 L
M10 67 Stanford	83 L
M11 83 at Stanford	58 W

+ at Rainbow Classic, Honolulu, HI

Primary Starters
 F-Bob Wolfe, 6-5, Jr., 7.8
 F-Myron Erickson, 6-5, Sr., 8.2 (Capt.)
 C-Bruce Steckel, 6-7, Sr., 9.5
 G-Russ Critchfield, 5-10, Jr., 21.0
 G-Charlie Perkins, 6-2, Sr., 18.7

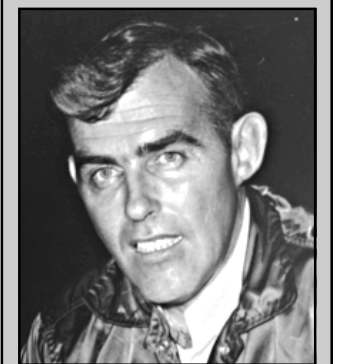
1967-68 (15-9, 7-7/4th AAWU) Head Coach: Rene Herrerias

CAL	OPP
D02 67 Idaho	55 W
D06 76 St. Mary's	69 W
D09 78 at San Francisco (OT)	74 W
D19 92 Athletes in Action (Ex.)	73 W
D22 79 Iowa	73 W
D23 89 Illinois	72 W
D28 88 SMU+	84 W

D29 85 Western Kentucky+	96 L
J05 63 at Oregon State	76 L
J06 96 at Oregon	81 W
J12 64 UCLA (X/1)	94 L
J13 65 USC	80 L
J20 74 Portland	61 W
F02 79 at Air Force	81 L
F03 96 at Denver	82 W
F09 79 Washington	66 W
F10 82 Washington State	76 W
F17 66 at Washington State	87 L
F19 52 at Washington	64 L
F23 76 Oregon	64 W
F24 71 Oregon State	58 W
M01 71 at UCLA (X/2)	115 L
M02 91 at USC (OT)	90 W
M08 88 Stanford	81 W
M09 51 at Stanford	64 L

+ at All Sports Classic, Dallas, TX

Primary Starters
 F-Bob Wolfe, 6-5, Sr., 9.6
 F-Stu Watterson, 6-7, Sr., 6.8
 C-Bob Presley, 6-10, Jr., 18.9
 G-Russ Critchfield, 5-10, Sr., 22.0 (Capt.)
 G-Trent Gaines, 6-2, So., 10.3



JIM PADGETT

1968-1972
52-55 (.495)

1968-69 (12-13, 4-10/t-7th Pac-8) Head Coach: Jim Padgett

CAL	OPP
D02 82 San Francisco	71 W
D04103 San Jose State (19/X)	98 W
D07 84 St. Mary's (19/X)	77 W
D18 70 Cincinnati (15/X)	71 L
D20 81 Purdue+ (15/12)	98 L
D21 86 Nebraska+ (15/X)	73 W
D26 74 Brigham Young&	82 L
D28 66 Yale&	59 W
D30 93 Arizona State&	81 W
J10 68 Washington State	60 W
J11 73 Washington (OT)	74 L
J17 73 Stanford	65 W
J24 73 Loyola Marymount	68 W
J25 97 Portland	62 W
J31 74 at UCLA (X/1)	109 L
F01 70 at USC	98 L
F07 69 at Oregon State	57 W
F08 73 at Oregon	84 L
F14 91 Oregon	70 W
F15 63 Oregon State	79 L
F22 65 at Washington	85 L
F24 66 at Washington State	84 L
F28 67 USC	76 L
M01 77 UCLA (OT) (X/1)	84 L
M07 79 at Stanford (2 OT)	83 L

Numbers in parentheses refer to Associated Press rankings at time of game (Cal ranking/opponent ranking).



YEAR-BY-YEAR RESULTS



+ at Sun Devil Classic, Phoenix, AZ
& at Far West Classic, Portland, OR

Primary Starters

F-Jackie Ridgley, 6-4, So., 20.0
F-Bill Duwe, 6-5, So., 7.0
C-Bob Presley, 6-11, Sr., 13.6
G-Charlie Johnson, 6-0, So., 14.0 (Capt.)
G-Waddell Blackwell, 6-0, Jr., 1.7

1969-70 (11-15, 5-9/6th Pac-8) Head Coach: Jim Padgett

CAL	OPP
D05 79 at Brigham Young	98 L
D06 77 at Brigham Young	75 W
D09 67 San Jose State	62 W
D12 57 Army+	51 W
D13 52 Santa Clara+ (X/15)	58 L
D22 83 New Mexico	79 W
D29 86 at Utah	80 W
D30 77 at Utah	96 L
J03 67 at San Francisco	69 L
J10 61 at Washington State	71 L
J12 84 at Washington (X/14)	64 W
J13 84 at Portland	66 W
J16 71 at Stanford	73 L
J23 55 Air Force	56 L
J24 63 Utah State (OT)	68 L
J30 72 UCLA (X/1)	87 L
J31 73 USC (X/15)	78 L
F06 71 Oregon State	55 W
F07 71 Oregon	77 L
F13 91 at Oregon	98 L
F14 67 at Oregon State	64 W
F20 91 Washington (OT)	86 W
F21 63 Washington State	74 L
F27 82 at USC	90 L
F28 95 at UCLA (X/2)	109 L
M07100 Stanford	85 W
+ at Cable Car Classic, San Francisco, CA	
Primary Starters	
F-Jackie Ridgley, 6-4, Jr., 16.6	
F-Tom Henderson, 6-5, Sr., 6.2	
C-Ansley Truitt, 6-9, So., 16.3	
G-Charlie Johnson, 6-0, Jr., 14.0	
G-Phil Chenier, 6-4, So., 10.3	

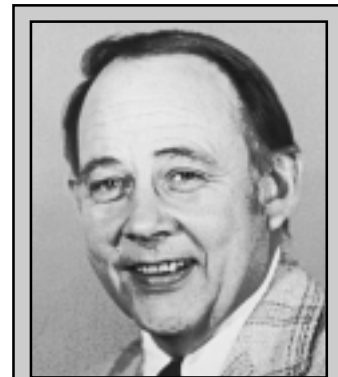
1970-71 (16-9, 8-6/t-3rd Pac-8) Head Coach: Jim Padgett

CAL	OPP
D04 87 at Arizona	79 W
D05 62 at New Mexico	82 L
D08 90 San Jose State	55 W
D11 77 Santa Clara+	63 W
D12 75 Weber State+	65 W
D21 71 Wyoming&	72 L
D22 77 Harvard&	74 W
D26 82 at Cincinnati	76 W
D29 63 Fordham	84 L
D30 94 Air Force	67 W
J08 101 at Oregon State (OT)	100 W
J09 81 at Oregon	100 L
J15 66 USC (X/3)	90 L
J16 76 UCLA (X/1)	94 L
J23 81 San Francisco	70 W
F05 99 Stanford	74 W
F06 100 at Stanford	84 W
F12 90 Washington State	72 W
F13 92 Washington	90 W
F20 80 at Washington	82 L
F22 102 at Washington State	76 W
F26 103 Oregon	72 W
F27 99 Oregon State	74 W
M05 69 at UCLA (X/1)	103 L
M06 81 at USC (X/3)	96 L
+ at Cable Car Classic, San Francisco, CA & at U. of Michigan Tournament, Ann Arbor, MI	
□ at Kodak Classic, Rochester, NY	
Primary Starters	
F-Jackie Ridgley, 6-4, Sr., 17.3 (Capt.)	

F-John Coughran, 6-6, So., 9.7
C-Ansley Truitt, 6-9, Jr., 16.6
G-Phil Chenier, 6-4, Jr., 16.8
G-Charlie Johnson, 6-0, Sr., 13.6 (Capt.)

1971-72 (13-16, 6-8/5th Pac-8) Head Coach: Jim Padgett

CAL	OPP
D02 82 Houston (2 OT)	81 W
D04 79 Arizona	76 W
D10 64 San Francisco+	63 W
D11 59 South Carolina+ (X/11)	67 L
D17 59 Princeton& (X/18)	85 L
D18 70 Missouri&	82 L
D28 76 Texas Christian	74 W
D29 79 Hawaii	87 L
D30 57 Temple	61 L
J03 127 Oklahoma City	67 W
J07 63 Washington	79 L
J08 79 Washington State (2 OT)	76 W
J14 69 at USC (X/10)	102 L
J15 43 at UCLA (X/1)	82 L
J17 89 New Mexico State	91 L
J22 83 at San Jose State	86 L
J24 89 at Santa Clara	79 W
J28 100 UC Davis	67 W
J31 87 at Utah State	96 L
F04 86 at Stanford (3 OT)	93 L
F05 84 Stanford	70 W
F11 79 Oregon (OT)	77 W
F12 68 Oregon State	74 L
F18 71 at Oregon	67 W
F19 68 at Oregon State	74 L
F26 81 at Washington State	78 W
F28 78 at Washington	90 L
M03 71 UCLA (X/1)	85 L
M04 84 USC (X/8)	74 W
+ at Cable Car Classic, San Francisco, CA & at Kentucky Classic, Lexington, KY	
□ at Rainbow Classic, Honolulu, HI	
Primary Starters	
F-John Coughran, 6-6, Jr., 18.6 (Capt.)	
F-Carl Meier, 6-8, So., 6.7	
C-Ansley Truitt, 6-9, Sr., 18.8 (Capt.)	
G-Eric Long, 6-1, Jr., 6.3	
G-Bill Duwe, 6-4, Sr., 12.9	



DICK EDWARDS

1972-1978

73-85 (.462)

1972-73 (11-15, 4-10/7th Pac-8) Head Coach: Dick Edwards

CAL	OPP
D02 70 St. Mary's	72 L
D08 75 Nebraska+	50 W
D09 63 West Virginia+	51 W
D16 75 at Houston (X/16)	79 L
D18 84 at Oklahoma City	95 L

D22 61 North Carolina (X/13)	64 L
D23 70 Fordham	83 L
D29 82 Illinois State	72 W
D30 72 Portland	63 W
J06 59 at Washington	71 L
J08 59 at Washington State	53 W
J12 64 USC	71 L
J13 50 UCLA (X/1)	69 L
J20 79 San Jose State	68 W
J22 88 Nevada	71 W
J27 83 Santa Clara	60 W
F03 68 Stanford	73 L
F09 70 at Oregon State	79 L
F10 55 at Oregon (OT)	60 L
F16 69 Oregon (OT)	72 L
F17 79 Oregon State	77 W
F23 98 Washington State	57 W
F24 77 Washington	72 W
M02 65 at UCLA	90 L
M03 53 at USC (X/1)	64 L
M09 66 at Stanford	70 L
+ at Mountaineer Classic, Morgantown, WV	
Primary Starters	
F-John Coughran, 6-6, Sr., 15.5 (Capt.)	
F-Bill Kellar, 6-4, Jr., 5.3	
C-Carl Meier, 6-8, Jr., 11.5	
G-Rickie Hawthorne, 6-3, Fr., 14.2	
G-Eric Long, 6-1, Sr., 7.7 (Capt.)	

1973-74 (9-17, 3-11/t-7th Pac-8) Head Coach: Dick Edwards

CAL	OPP
D05 70 at North Carolina	74 L
D07 74 West Virginia+	76 L
D08 81 Seton Hall+	76 W
D15 67 Loyola Marymount	75 L
D17 66 Seattle	63 W
D21 64 Drake&	62 W
D22 62 Dayton&	64 L
64 Pennsylvania	63 W
64 Penn State	63 W
42 Temple	51 L
J04 61 Oregon State	54 W
J05 42 Oregon	54 L
J07 75 Rice (OT)	76 L
J11 56 at UCLA (X/1)	92 L
J12 61 at USC (X/17)	76 L
J26 62 San Jose State	60 W
F01 53 at Stanford	71 L
F08 69 Washington State	65 W
F09 76 Washington	82 L
F16 78 at Washington	86 L
F18 57 at Washington State	74 L
F22 54 at Oregon	61 L
F23 73 at Oregon State	77 L
M01 60 UCLA* (X/3)	83 L
M02 67 USC (X/10)	70 L
M08 71 Stanford	68 W
+ at Mountaineer Classic, Morgantown WV & at Dayton Classic, Dayton, OH	
□ at Quaker City Classic, Philadelphia, PA	
* at Oakland Coliseum	
Primary Starters	
F-Carl Meier, 6-8, Sr., 10.5 (Capt.)	
F-John Terry, 6-5, Jr., 5.1	
C-Rock Lee, 6-10, Fr., 7.2	
G-Rickie Hawthorne, 6-3, So., 14.1	
G-Brady Allen, 6-3, Sr., 11.4 (Capt.)	

1974-75 (17-9, 7-7/4th Pac-8) Head Coach: Dick Edwards

CAL	OPP
N30 98 Colorado	78 W
D02 73 at Seattle	71 W
D06 76 Purdue (X/12)	73 W
D07 43 Stetson	59 L
D16 85 at Colorado	76 W
D18 64 at Rice	54 W
D27 84 Arizona+ (X/10)	82 W
D28 73 Old Dominion+	84 L

J04 77 Morehead State	71 W
J10 64 at Oregon State	70 L
J11 60 at Oregon (X/9)	58 W
J17 65 USC (X/6)	85 L
J18 72 UCLA (X/2)	102 L
J21 89 UC Davis	78 W
J25 86 CS-Los Angeles	77 W
J28 92 San Jose State	85 W
F01 60 Stanford (X/17)	46 W
F06 57 at Washington	83 L
F08 56 at Washington State	46 W
F14 78 Washington State	64 W
F15 78 Washington	71 W
F21 76 Oregon	74 W
F22 54 Oregon State (X/20)	68 L
F28 47 at UCLA (X/5)	51 L
M01 59 at USC (X/12)	82 L
M07 68 at Stanford	63 W
+ at Old Dominion Classic, Norfolk, VA	
Primary Starters	
F-Carl Bird, 6-8, Jr., 12.7	
F-Doug Vilotti, 6-7, So., 5.5	
C-Jay Young, 6-9, Jr., 10.8	
G-Rickie Hawthorne, 6-3, Jr., 16.2	
G-Connie White, 6-4, Jr., 13.2	

1975-76 (13-13, 5-9/t-6th Pac-8) Head Coach: Dick Edwards

CAL	OPP
N28 93 Loyola (Chicago)+	75 W
N29 68 Louisiana State+	85 L
D04 76 Idaho State	65 W
D06 72 UC Davis	62 W
D09 73 Fresno State	54 W
D20 59 at Morehead State	76 L
D22 79 at Purdue	97 L
D29 75 Wichita State&	68 W
D30 82 West Virginia&	68 W
J09 56 Washington (X/8)	76 L
J10 69 Washington State	74 L
J15 81 at USC	80 W
J17 71 at UCLA (X/8)	80 L
J21 75 Santa Clara	68 W
J24 89 at Stanford (2 OT)	85 W
J26 70 at St. Mary's	67 W
J29 80 San Jose State	82 L
F05 73 at Oregon State	72 W
F07 60 at Oregon	79 L
F13 64 Oregon	75 L
F14 70 Oregon State	78 W
F19 85 at Washington State	98 L
F21 75 at Washington (X/11)	95 L
F27 93 UCLA (X/9)	113 L
F28 96 USC (OT)	94 W
M05 65 Stanford	73 L
+ at LSU Classic, Baton Rouge, LA & at Lobo Classic, Albuquerque, NM	
□ Later forfeited by Oregon State	
Primary Starters	
F-Carl Bird, 6-8, Sr., 15.2	
F-Connie White, 6-4, Sr., 10.3	
C-Jay Young, 6-9, Sr., 6.9	
G-Gene Ransom, 5-9, Fr., 13.2	
G-Rickie Hawthorne, 6-3, Sr., 13.0	

1976-77 (12-15, 7-7/6th Pac-8) Head Coach: Dick Edwards

CAL	OPP
N27 92 Portland	58 W
D03 70 San Francisco (X/10)	93 L
D10 73 at Iowa	94 L
D13 70 at Iowa State	78 L
D18 73 at Idaho State	98 L
D22 67 Louisiana State	69 L
D28 76 Baylor+	67 W
D29 71 VMI+	73 L
D30 70 Brigham Young+	75 L
J06 75 at Washington	85 L
J08 63 at Washington State	77 L
J13 74 UCLA (X/12)	82 L

Cal History





J15	84	USC	76	W
J19	87	Seattle	69	W
J22	69	at Santa Clara	76	L
J25	90	St. Mary's	50	W
J27	64	UC Davis	52	W
F04	63	at Oregon State	79	L
F05	49	at Oregon	75	L
F10	107	Oregon (5 OT)	102	W
F12	84	Oregon State	83	W
F18	66	Washington State	52	W
F19	86	Washington	58	W
F24	95	at USC	78	W
F26	69	at UCLA (X/5)	91	L
M03	66	at Stanford	85	L
M05101	Stanford	91	W	

Primary Starters

F-Ray Murry, 6-5, Sr., 17.4
 F-Doug True, 6-7, Fr., 10.3
 C-Tom Schneiderjohn, 6-11, So., 12.8
 G-Gene Ransom, 5-9, So., 14.2
 G-John Caselli, 6-3, So., 7.5

**1977-78
 (11-16, 4-10/7th Pac-8)
 Head Coach: Dick Edwards**


CAL	OPP			
N26	92	Cal Poly-Pomona	52	W
N28	97	Drake	78	W
D01	81	Nevada (OT)	89	L
D03	91	Bakersfield State	75	W
D07	55	at Fresno State	60	L
D10	70	Iowa	75	L
D17102	Iowa State	73	W	
D22	90	at San Francisco (X/11)	89	W
D27	74	at San Jose State	76	L
D30	83	UC Irvine	50	W
J06	47	at Oregon	49	L
J07	55	at Oregon State (2 OT)	57	L
J12	77	Washington	85	L
J14	66	Washington State	64	W
J17	61	Santa Clara	63	L
J20	93	Alaska-Anchorage	85	W
J21	66	at Portland	67	L
J28	84	at Stanford	68	W
F02	81	at USC	87	L
F04	75	at UCLA (X/5)	94	L
F10	64	UCLA (X/5)	78	L
F11	70	USC	68	W
F16	68	Oregon State	70	L
F18	76	Oregon	67	W
F24	83	at Washington State	90	L
F26	76	at Washington	83	L
M04	85	Stanford	86	L

Primary Starters

F-Doug True, 6-7, So., 10.3
 F-Kevin Singleton, 6-6, So., 9.7
 C-Tom Schneiderjohn, 6-11, Jr., 10.3
 G-Gene Ransom, 5-9, Jr., 17.0
 G-John Caselli, 6-3, Jr., 6.1

**1978-79
 (6-21, 4-14/10th Pac-10)
 Head Coach: Dick Kuchen**

CAL	OPP			
N24	73	Cal Poly-Pomona	52	W
N25	77	San Jose State	66	W
N30	67	San Francisco (X/15)	76	L
D09	67	at Seattle	81	L
D12	83	at Drake	86	L
D15	58	Providence+	59	L
D16	68	Fairfield+	81	L
D22	73	CS Los Angeles	78	L
D26	54	USC	59	L
D28	67	UCLA (X/3)	95	L
D30	61	at Nevada (OT)	66	L
J04	70	at Arizona State	59	W
J06	64	at Arizona	69	L
J13	67	Washington State	65	W
J15	45	Washington	39	W
J20	50	Stanford	73	L



DICK KUCHEN
 1978-1985
 80-112 (.417)

J27	51	at Oregon State	76	L
J29	59	at Oregon	74	L
F02	75	Arizona	83	L
F03	55	Arizona State	91	L
F08	56	at Washington	71	L
F10	52	at Washington State	68	L
F17	49	at Stanford	54	L
F23	74	Oregon	62	W
F24	51	Oregon State	59	L
M01	68	at UCLA (X/3)	79	L
M03	64	at USC	86	L

Primary Starters

F-Kevin Singleton, 6-6, Jr., 16.1
 F-Doug True, 6-7, Jr., 9.3
 C-Tom Schneiderjohn, 6-11, Sr., 6.5
 G-Kevin Sparks, 6-1, Fr., 7.6
 G-John Caselli, 6-3, Sr., 7.3

**1979-80
 (8-19, 3-15/10th Pac-10)
 Head Coach: Dick Kuchen**

CAL	OPP			
N30	64	at UC Santa Barbara	56	W
D07	62	San Francisco+	67	L
D14	63	UC Riverside	69	L
D15109	UC San Diego	64	W	
D18	87	UC Davis	59	W
D21	52	Kentucky& (X/3)	78	L
D22	88	Southern Methodist&	97	L
D28	59	at UCLA (X/16)	73	L
D29	74	at USC	84	L
J03	81	Arizona	89	L
J05	63	Arizona State	74	L
J12	71	at Washington	96	L
J14	64	at Washington State	83	L
J16	73	at Santa Clara	70	W
J19	77	at Stanford	69	W
J24	80	Oregon	71	W
J26	55	Oregon State (X/2)	86	L
J31	58	at Arizona State	69	L
F02	62	at Arizona	65	L
F07	68	Washington State	80	L
F09	66	Washington	68	L
F16	74	Stanford	75	L
F18	94	U.S. International	80	W
F23	67	at Oregon	75	L
F25	51	at Oregon State (X/6)	52	L
F28	69	USC	66	W
M01	58	UCLA	83	L

Primary Starters

F-Doug True, 6-8, Sr., 15.1
 F-Darrell Haley, 6-7, Fr., 4.9
 C-Michael Pitts, 6-11, Fr., 13.1
 G-Michael Chavez, 5-9, Fr., 11.9
 G-Phil Wilhite, 5-9, Sr., 7.0

**1980-81
 (13-14, 5-13/t-8th Pac-10)
 Head Coach: Dick Kuchen**

CAL	OPP			
D08	81	UC San Diego	56	W
D12	58	Indiana+ (X/7)	94	L
D13	77	Alcorn State+	73	W
D17	75	CS Dominguez Hills	59	W
D20	78	Nevada	59	W
D22	88	Seattle Pacific	72	W
D27	91	Chaminade	67	W
D29	60	San Diego	56	W
J03	58	Stanford	56	W
J06	69	UC Santa Barbara	62	W
J10	53	at Oregon State (X/2)	80	L
J12	80	at Oregon	87	L
J16	52	Washington State	63	L
J17	74	Washington	65	W
J24	61	at UCLA (X/12)	75	L
J26	66	at USC	72	L
J31	71	Arizona	73	L
F02	81	Arizona State (2 OT) (X/5)	84	L
F06	54	Oregon State (X/2)	69	L
F07	85	Oregon	77	W
F12	75	at Washington	98	L
F14	73	at Washington State	65	W
F19	66	UCLA (X/6)	72	L
F21	73	USC (OT)	71	W
F26	72	at Arizona	83	L
F28	68	at Arizona State (X/5)	81	L
M07	72	at Stanford	81	L

Primary Starters

F-Sam Potter, 6-7, Fr., 11.2
 F-Michael Pitts, 6-11, So., 8.8
 C-Mark McNamara, 6-10, Jr., 17.2
 G-Kevin Singleton, 6-6, Sr., 11.6
 G-Michael Chavez, 5-9, So., 7.6

**1981-82
 (14-13, 8-10/t-6th Pac-10)
 Head Coach: Dick Kuchen**

CAL	OPP			
N30	83	UC Davis	76	W
D04	64	San Francisco+ (X/14)	72	L
D05	74	UC Santa Barbara	61	W
D12	82	at Nevada	95	L
D18	77	Wyoming& (OT)	75	W
D19	48	Tennessee&	80	L
D22	77	Colgate	47	W
D28	66	at San Diego	60	W
D30	72	CS Northridge	67	W
J02	87	at Stanford	78	W
J08	91	Oregon	81	W
J09	43	Oregon State (X/17)	74	L
J14	55	at Washington State (OT)	57	L
J16	62	at Washington	74	L
J22	59	USC	66	L
J23	56	UCLA	83	L
J29	57	at Arizona State	70	L
J30	85	at Arizona	73	W
F06	70	at Oregon	60	W
F08	50	at Oregon State (X/10)	57	L
F12	54	Washington (X/19)	50	W
F13	48	Washington State	49	L
F19	65	at UCLA (OT)	70	L
F20	70	at USC	75	L
F26	63	Arizona	59	W
F27	70	Arizona State	65	W
M06	78	Stanford	59	W

Primary Starters

F-Wes Howell, 6-3, Sr., 8.3
 F-Darrell Haley, 6-7, Jr., 4.6
 C-Mark McNamara, 6-11, Sr., 22.0
 G-Michael Chavez, 5-9, Jr., 10.3
 G-Butch Hays, 6-3, So., 10.2

Numbers in parentheses refer to Associated Press rankings at time of game (Cal ranking/opponent ranking).

**1982-83
 (14-14, 7-11/t-6th Pac-10)
 Head Coach: Dick Kuchen**

CAL	OPP			
D04	76	Duke+	71	W
D13	93	Seattle Pacific	75	W
D17	61	St. Mary's	52	W
D18	57	Santa Clara	59	L
D21	67	at Loyola (Chicago)	75	L
D28	69	E. Tennessee State& (OT)	71	L
D29	76	St. Louis&	74	W
J06	67	at Oregon (OT)	69	L
J08	59	at Oregon State	52	W
J13	106	UC Davis	62	W
J17	75	Stanford	61	W
J20	63	UCLA (X/1)	68	L
J22	56	USC	65	L
J27	64	at Washington State	66	L
J29	57	at Washington	58	L
F01	99	Hawaii Pacific	73	W
F03	65	Arizona State	72	L
F05	59	Arizona	57	W
F11	80	Pacific	53	W
F12	66	at Stanford	64	W
F19	60	at UCLA (X/10)	70	L
F21	53	at USC	55	L
F24	96	Washington	64	W
F26	54	Washington State	56	L
M03	69	at Arizona State	79	L
M05	84	at Arizona	59	W
M10	65	Oregon State (OT)	70	L
M12	75	Oregon	63	W

Primary Starters

+ at Oakland Coliseum
 & at Budweiser Classic, St. Louis, MO

F-Dave Butler, 6-9, Fr., 7.8
 F-Darrell Haley, 6-7, Sr., 7.7
 C-Michael Pitts, 6-11, Jr., 14.4
 G-Michael Chavez, 5-9, Sr., 13.3
 G-Butch Hays, 6-4, Jr., 10.5

**1983-84
 (12-16, 5-13/9th Pac-10)
 Head Coach: Dick Kuchen**

CAL	OPP			
N26	79	UC San Diego	62	W
D03	47	at Tennessee	62	L
D05	76	UC Davis	50	W
D07	54	Nevada	57	L
D09	56	at Pacific	36	W
D17	52	at St. Mary's	48	W
D22	60	at Santa Clara (OT)	52	W
D27	74	Loyola (Chicago)	68	W
D29	58	Bowling Green+	59	L
D30	72	Idaho State+	54	W
J02	50	Washington	67	L
J05	55	Oregon	54	W
J13	66	at Stanford	64	W
J19	54	at UCLA	76	L
J21	56	at USC	73	L
J26	68	Washington State (OT)	63	W
J28	42	Oregon State	44	L
F02	50	at Arizona	56	L
F04	60	at Arizona State	75	L
F10	51	Stanford	62	L
F16	62	UCLA (OT)	70	L
F18	46	USC	37	W
F23	51	at Washington (X/18)	54	L
F25	62	at Washington State	71	L
M01	54	Arizona State	59	L
M03	70	Arizona	62	W
M08	60	at Oregon State (OT) (X/20)	64	L
M10	44	at Oregon	45	L

Primary Starters

+ at Lobo Invitational, Albuquerque, NM

F-Butch Hays, 6-4, Sr., 12.6 (Capt.)
 F-Jim Beatie, 6-7, Fr., 3.7
 C-Dave Butler, 6-9, So., 11.0
 G-Chris Washington, 6-1, Fr., 9.7
 G-Kevin Johnson, 6-1, Fr., 9.7

YEAR-BY-YEAR RESULTS



1984-85 (13-15, 5-13/t-8th Pac-10) Head Coach: Dick Kuchen

CAL	OPP
N24 58	St. Mary's..... 53 W
N26 69	UC Davis..... 63 W
D03 92	Seattle Pacific..... 71 W
D08 80	at Nevada..... 92 L
D18 71	Dartmouth..... 44 W
D21 79	Seattle..... 43 W
D22 73	Montana State..... 45 W
D27 55	Portland+..... 51 W
D29 70	Oregon+..... 68 W
D30 59	Oregon State+..... 70 L
J05 67	at Washington State..... 86 L
J10 67	Arizona..... 69 L
J12 70	Arizona State..... 77 L
J17 54	at Washington..... 72 L
J19 87	Stanford..... 72 W
J24 69	at UCLA..... 80 L
J26 80	at USC..... 86 L
J31 42	Oregon State (X/14)..... 36 W
F02 50	Oregon..... 37 W
F07 60	at Arizona State..... 61 L
F09 48	at Arizona..... 66 L
F16 43	at Stanford (2 OT)..... 41 W
F21 48	UCLA..... 54 L
F23 52	USC..... 75 L
F28 53	at Oregon..... 70 L
M02 37	at Oregon State..... 51 L
M07 38	Washington..... 41 L
M09 67	Washington State..... 58 W

+ at Far West Classic, Portland, OR
Primary Starters
F-Jeff Thiigen, 6-4, Sr., 4.3 (Capt.)
F-Jim Beatie, 6-7, So., 3.1
C-Leonard Taylor, 6-8, Fr., 12.4
G-Chris Washington, 6-1, So., 13.1
G-Kevin Johnson, 6-1, So., 12.9



LOU CAMPANELLI

1985-1993
123-108 (.572)

1985-86 (19-10, 11-7/3rd Pac-10) Head Coach: Lou Campanelli

CAL	OPP
N25 46	at Missouri..... 61 L
N30 88	UC San Diego..... 46 W
D03 74	UC Davis..... 51 W
D05 87	Hawaii..... 71 W
D07 69	at Montana State..... 62 W
D18 67	at St. Mary's..... 62 W
D20 52	Nevada..... 51 W
D27 80	Drake+..... 55 W
D28 53	Dayton+ (OT)..... 59 L
J02 62	Washington..... 60 W
J04 84	Washington State..... 68 W
J06 59	San Francisco..... 58 W
J09 67	at Arizona State..... 69 L

J12 72	at Arizona (2 OT)..... 79 L
J18 75	at Stanford..... 69 W
J22 62	USC..... 61 W
J25 75	UCLA..... 67 W
J31 42	at Oregon State..... 58 L
F02 55	at Oregon..... 65 L
F06 52	Arizona..... 61 L
F08 83	Arizona State..... 61 W
F15 81	Stanford..... 53 W
F20 63	at UCLA..... 76 L
F24 65	at USC..... 63 W
F27 64	Oregon..... 55 W
M02 72	Oregon State..... 66 W
M06 78	at Washington State (OT) 81 L
M08 78	at Washington (OT)..... 72 W
M13 75	Loyola Marymount&..... 80 L

+at Merrill Lynch Classic, Dayton, OH & National Invitation Tournament, Berkeley, CA
Primary Starters
F-Dave Butler, 6-9, Jr., 11.8 (Capt.)
F-Jeff Huling, 6-5, Jr., 5.0
C-Leonard Taylor, 6-8, So., 11.9
G-Kevin Johnson, 6-1, Jr., 15.6
G-Chris Washington, 6-1, Jr., 10.2

1986-87 (20-15, 10-8/t-3rd Pac-10) Head Coach: Lou Campanelli

Cal	Opp
N28 90	UC Davis..... 71 W
N29 60	at Nevada..... 74 L
D02 64	Missouri..... 63 W
D04 80	UNC-Charlotte..... 63 W
D06 63	at San Francisco..... 65 L
D17 53	St. Mary's..... 51 W
D18 70	Central Michigan..... 57 W
D21 69	Oregon State..... 61 W
D23 78	Oregon..... 67 W
D27 83	Florida+ (X/20)..... 80 W
D29 63	Wisconsin+..... 66 L
D30 58	Arkansas+..... 74 L
J02 79	at USC..... 76 W
J04 81	at UCLA..... 86 L
J08 92	Washington State..... 58 W
J10 61	Washington..... 70 L
J12 61	at Colorado..... 76 L
J17 87	Stanford..... 72 W
J19 85	Hofstra..... 55 W
J23 82	at Arizona (2 OT)..... 81 W
J25 53	at Arizona State..... 61 L
J29 73	at Oregon..... 86 L
J31 57	at Oregon State..... 59 L
F05 56	USC..... 53 W
F07 72	UCLA..... 77 L
F12 70	at Washington..... 68 W
F15 68	at Washington State..... 66 W
F22 80	at Stanford..... 88 L
F26 71	Arizona State..... 65 W
M01 51	Arizona..... 70 L
M06 64	Oregon State&..... 57 W
M07 68	UCLA& (X/18)..... 75 L
M13 72	CS Fullerton□ (OT)..... 68 W
M17 65	Oregon State*..... 62 W
M21 73	Arkansas-Little Rock#..... 80 L

+ at Rainbow Classic, Honolulu, HI & Pac-10 Tournament, Pauley Pavilion, Los Angeles, CA
□ National Invitation Tournament, Berkeley, CA
* National Invitation Tournament, Gill Coliseum, Corvallis, OR
National Invitation Tournament, Little Rock, AR
Primary Starters
F-Dave Butler, 6-9, Sr., 11.9 (Capt.)
F-Jon Wheeler, 6-7, Sr., 8.4
C-Leonard Taylor, 6-8, Jr., 19.0
G-Kevin Johnson, 6-1, Sr., 17.2 (Capt.)
G-Chris Washington, 6-1, Sr., 7.0

1987-88 (9-20, 5-13/t-8th Pac-10) Head Coach: Lou Campanelli

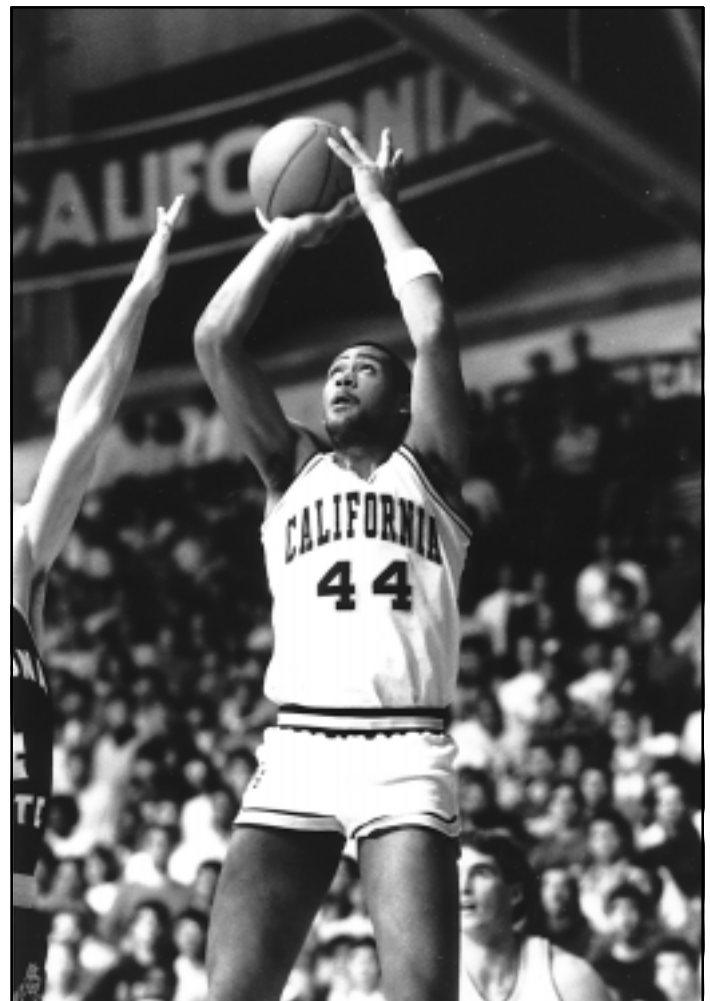
Cal	Opp
N28 70	at Creighton..... 49 W
D03 83	San Francisco (OT)..... 88 L
D06 50	at Villanova..... 65 L
D16 86	U.S. International..... 66 W
D18 89	Drexel..... 74 W
D21 83	UCLA..... 70 W
D23 56	USC (2 OT)..... 58 L
D28 50	Alabama-Birmingham+..... 64 L
D29 51	Boston College+..... 65 L
J02 53	North Carolina-Asheville 58 L
J07 51	at Arizona (X/3)..... 80 L
J09 60	at Arizona State..... 82 L
J14 37	Washington State..... 59 L
J16 77	Washington..... 75 W
J23 54	at Stanford..... 70 L
J28 77	at Oregon..... 74 W
J30 46	at Oregon State..... 82 L
F04 75	Arizona State..... 88 L
F07 62	Arizona (X/1)..... 74 L
F11 84	at Washington (OT)..... 82 W
F13 82	at Washington State..... 76 W
F16 51	at St. Mary's..... 61 L
F21 61	Stanford..... 71 L
F25 54	Oregon State..... 65 L
F27 56	Oregon..... 62 L
M03 46	at USC..... 63 L
M06 66	at UCLA..... 74 L
M10 75	USC&..... 59 W

M11 64	Arizona& (X/3)..... 88 L
--------	--------------------------

+ at Sun Bowl Classic, El Paso, TX & at Pac-10 Tournament, McKale Center, Tuscon, AZ
Primary Starters
F-Matt Beeuwsaert, 6-6, Jr., 13.9
F-Roy Fisher, 6-7, Fr., 9.6
C-John Carty, 6-10, Fr., 2.9
G-Keith Smith, 6-4, So., 12.9
G-Ryan Drew, 6-2, Fr., 11.0
Captains: Jim Beatie, Leonard Taylor

1988-89 (20-13, 10-8/5th Pac-10) Head Coach: Lou Campanelli

CAL	OPP
N25 73	Florida+ (X/15)..... 58 W
N26 71	Kansas+..... 86 L
N28 71	Kentucky+..... 89 L
N30 76	Grambling..... 58 W
D03 57	at San Francisco..... 54 W
D05 99	U.S. International..... 73 W
D07 88	Tennessee Tech..... 57 W
D10 73	Villanova (X/17)..... 71 W
D21 59	at UCLA..... 76 L
D23 73	at USC..... 66 W
D28 78	American..... 65 W
D30 92	Central Connecticut..... 44 W
J02 70	Colorado..... 54 W
J05 80	Arizona State..... 64 W
J07 55	Arizona (X/8)..... 64 L
J12 63	at Washington State..... 62 W



Leonard Taylor averaged 11.9 ppg in 1986, helping Cal to the NIT and its first postseason tournament berth in 26 years.





YEAR-BY-YEAR RESULTS



J15	80	at Washington	82 L
J19	75	Stanford (X/20)	64 W
J26	64	Oregon State (OT)	69 L
J28	80	Oregon	62 W
F02	59	at Arizona (X/4)	86 L
F04	73	at Arizona State	63 W
F09	84	Washington	70 W
F11	86	Washington State	69 W
F14	74	at Brigham Young	87 L
F16	71	at Stanford (X/17)	97 L
F23	54	at Oregon State	60 L
F26	78	at Oregon	74 W
M02	73	UCLA	81 L
M04	74	USC	62 W
M10	66	Oregon State&	79 L
M16	73	Hawaii	57 W
M20	72	Connecticut*	73 L
+ at Great Alaska Shootout, Sullivan Arena, Anchorage, AK			
& at Pac-10 Tourney, The Forum, Inglewood, CA			
□ National Invitation Tournament, Berkeley, CA			
* National Invitation Tournament, Hartford Civic Center, Hartford, CT			
Primary Starters			
F—Matt Beeuwaert, 6-6, Sr., 9.6p, 5.4r (Capt.)			
F—Roy Fisher, 6-7, So., 11.3p, 6.0r			
C—Leonard Taylor, 6-8, Sr., 19.7p, 8.2r (Capt.)			
G—Keith Smith, 6-4, Jr., 13.3p, 5.8a			
G—Ryan Drew, 6-2, So., 8.7p, 2.0r			

1989-90
(22-10, 12-6/3rd Pac-10)
Head Coach: Lou Campanelli

CAL	OPP	
N 15	70 Air Force#	49 W
N 17	81 UNLV##	101 L
N 27	95 Cal Poly Pomona	72 W
N 29	76 Prairie View A&M	68 W
D 02	83 San Francisco	61 W
D 05	97 U.S. International	87 W
D 09	99 UC Irvine	78 W
D 20	55 at Purdue	60 L
D 23	85 Brigham Young	63 W
D 27	98 Columbia	61 W
D 29	82 Cornell	49 W
J 02	70 at Arizona (OT) (X/19)	71 L
J 05	95 Oregon	72 W
J 07	58 Oregon State (X/13)	64 L
J 11	72 at Washington State	67 W
J 13	63 at Washington	58 W
J 18	74 USC	60 W
J 21	97 UCLA (X/16)	106 L
J 25	68 at Arizona State (2 OT)	66 W
F 01	81 at Oregon State (X/21)	98 L
F 04	79 at Oregon	78 W
F 08	86 Washington	64 W
F 10	69 Washington State	51 W
F 15	79 at UCLA (X/23)	71 W
F 17	74 at USC	70 W
F 21	68 Arizona (X/21)	93 L
F 23	69 Arizona State	60 W
F 28	66 at Stanford	63 W
M 04	58 Stanford	79 L
M 09	61 Stanford+	77 L
M 15	65 Indiana&	63 W
M 17	54 Connecticut& (X/4)	74 L
# Preseason NIT, Harmon Gym, Berkeley, CA		
## Preseason NIT, Las Vegas, NV		
+ at Pac-10 Tournament, University Activity Center, Tempe, AZ		
& at NCAA East Regional, Hartford Civic Center, Hartford, CT		
Primary Starters		
F—Roy Fisher, 6-7, Jr., 14.9p, 6.3 r		
F—Brian Hendrick, 6-8, Fr., 14.9p, 7.6r		
G—Keith Smith, 6-4, Sr., 16.6p, 6.4a (Capt.)		
G—Ryan Drew, 6-3, Jr., 9.8 p, 2.5r		
G—Bryant Walton, 6-4, Sr., 5.1p, 3.0r		

1990-91
(13-15, 8-10/t-5th Pac-10)
Head Coach: Lou Campanelli

CAL	OPP	
N24	81 at Houston	98 L
D 01	86 at San Francisco	63 W
D 03	93 San Jose State	53 W
D 06	65 Purdue	66 L
D19121	U.S. International	97 W
D22	88 at UC Irvine	98 L
D28	66 Stetson#	69 L
D29	73 Alaska-Anchorage#	88 L
D30	81 Iona#	64 W
J 03	67 at Oregon	73 L
J 05	55 at Oregon State	59 L
J10	81 Washington State	90 L
J13	70 Washington	68 W
J17	69 at USC	66 W
J20	81 at UCLA (X/7)	98 L
J24	76 Arizona State	65 W
J26	85 Arizona (X/5)	78 W
J31	83 Oregon State	76 W
F 03	71 Oregon	74 L
F 07	67 at Washington	46 W
F 09	75 at Washington State	84 L
F14	82 UCLA (X/15)	79 W
F17	76 USC	85 L
F21	63 at Arizona (X/9)	100 L
F24	78 at Arizona State	87 L
M2	72 at Stanford	90 L
M5	99 Cal State Northridge	78 W
M7	75 Stanford	70 W
# at Rainbow Classic, Honolulu, HI		
Primary Starters		
F—Brian Hendrick, 6-8, So., 17.6		
F—Roy Fisher, 6-7, Sr., 13.7 (Co-Capt.)		
G—Sean Harrell, 5-11, Sr., 6.1		
G—Billy Dreher, 6-4, So., 13.2		
G—Bill Elleby, 6-3, Jr., 10.2		
Other Co-Capt.: Ryan Drew		

1991-92
(10-18, 4-14/9th Pac-10)
Head Coach: Lou Campanelli

CAL	OPP	
N22	91 Nevada	73 W
N25	97 Morgan State	50 W
N29	76 LaSalle#	99 L
N30	68 Virginia Tech#	59 W
D03	73 San Francisco	80 L
D07	62 Oklahoma State@ (X/8)	76 L
D21	75 Houston	81 L
D28	93 at San Jose State	87 W
D30	82 Manhattan	56 W
J02	92 Columbia	64 W
J10	57 at Oregon	67 L
J12	65 at Oregon State	77 L
J15	61 at Stanford	76 L
J23	66 UCLA\$ (X/2)	86 L
J25	83 USC	85 L
J30	76 at Washington	58 W
F01	83 at Washington State	101 L
F06	68 Arizona State	61 W
F09	68 Arizona (X/7)	80 L
F15	66 Stanford\$	92 L
F18	76 at UCLA (X/2)	82 L
F20	81 at USC	94 L
F27	72 Washington State	79 L
F29	74 Washington	76 L
M05	77 at Arizona (X/4)	100 L
M07	71 at Arizona State	74 L
M12	79 Oregon State	66 W
M14	87 Oregon	76 W
# at Central Fidelity Classic, Richmond, VA		
@ at Tulsa, OK		
\$ at Oakland Coliseum		
Primary Starters		
F—Brian Hendrick, 6-9, Jr., 16.1		
F—Lamond Murray, 6-6, Fr., 13.8		
F—Alfred Grigsby, 6-8, Fr., 10.2		
G—K.J. Roberts, 5-11, Fr., 8.3		
G—Bill Elleby, 6-3, Sr., 11.9		

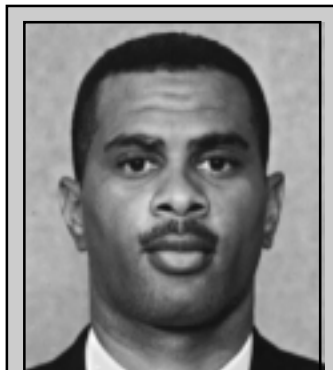


Keith Smith served as captain of Cal's 1990 NCAA Tournament team.

1992-93
(21-9, 12-6/2nd Pac-10)
Head Coaches:
Lou Campanelli (10-7)
Todd Bozeman (11-2)

CAL	OPP	
D1	89 Sacramento State\$	65 W
D5	80 Oklahoma State	65 W
D7	89 at San Francisco	79 W
D20	80 at Santa Clara (25/X)	73 W
D22	81 Wake Forest\$ (21/X)	65 W
D29	75 James Madison# (19/X)	90 L
D30	54 Cornell#	74 L
J3	84 Texas Southern	69 W
J7	82 Oregon	65 W
J9	63 Oregon State	64 L
J14	83 Stanford	66 W
J21	65 at USC	67 L
J24	104 at UCLA (X/23)	82 W
J28	79 Washington	65 W
J30	75 Washington State	83 L
F4	83 at Arizona State	90 L
F7	81 at Arizona *(X/8)	93 L
F10	92 CS Northridge	68 W
F14	86 at Stanford	61 W
F18	86 USC (OT)	83 W
F20	71 UCLA\$	85 L
F25	76 at Washington State	67 W
F27	76 at Washington	75 W
M4	74 Arizona\$ (X/3)	71 W
M6	91 Arizona State&	67 W
M11	78 at Oregon State	72 W
M13	79 at Oregon	76 W
M18	66 LSU@	64 W
M20	82 Duke@ (X/10)	77 W
M25	76 Kansas% (X/9)	93 L
\$ at Oakland Coliseum		
# at Seton Hall Meadowlands Classic, E. Rutherford, NJ		
@ at NCAA Midwest Regional, Rosemont Horizon, Rosemont, IL		
% at NCAA Midwest Regional, St. Louis Arena, St. Louis, MO		

Primary Starters
F—Lamond Murray, 6-7, So., 19.1
F—Alfred Grigsby, 6-9, So., 10.0
C—Brian Hendrick, 6-9, Sr., 10.4
G—Jason Kidd, 6-4, Fr., 13.0
G—K.J. Roberts, 5-11, So., 5.1



TODD BOZEMAN
1993-1996
35-63 (.357)

1993-94
(22-8, 13-5/T2nd Pac-10)
Head Coach: Todd Bozeman

CAL	OPP	
N17	81 Santa Clara# (6/X)	74 W
N19	56 at Kansas@ (6/9)	76 L
D1	82 at Texas Southern (13/X)	70 W
D4	67 Santa Clara^ (13/X)	80 L

Numbers in parentheses refer to Associated Press rankings at time of game (Cal ranking/opponent ranking).





YEAR-BY-YEAR RESULTS



D10	80	Maryland-BC% (25/X).....	48	W
D12	83	Tulane%.....	70	W
D23	85	Richmond.....	78	W
D30	73	at Wake Forest.....	72	W
J2	94	St. Mary's^.....	77	W
J6	70	Washington State (24/X).....	54	W
J8	79	Washington (24/X).....	64	W
J13	98	at Arizona (OT) (19/6).....	93	W
J15	60	at Arizona State (19/X).....	63	L
J20	79	at Stanford (21/X).....	88	L
J27	77	USC^.....	68	W
J30	85	UCLA^ (X/1).....	70	W
F3	67	at Oregon State (19/X).....	61	W
F5	81	at Oregon (19/X).....	61	W
F7	93	CS Northridge (18/X).....	63	W
F10	95	Arizona State (18/X).....	78	W
F13	77	Arizona (18/16).....	96	L
F17	80	Stanford (19/X).....	62	W
F20	89	Cincinnati* (19/23).....	80	W
F24	92	at UCLA (17/15).....	88	W
F26	78	at USC (OT) (17/X).....	86	L
M3	82	Oregon (20/X).....	73	W
M5	74	Oregon State^ (20/X).....	44	W
M10	62	at Washington (16/X).....	56	W
M12	82	at Washington State (X/16)94 L		
M17	57	Wis.-Green Bay\$ (16/X).....	61	L

Preseason NIT, San Jose Arena
 @ Preseason NIT, Lawrence, KS
 ^ at Oakland Coliseum
 % Otis Spunkmeyer Classic, Oakland Coliseum
 * at 7UP Shoot-Out, Orlando Arena, Orlando, FL
 \$ at NCAA West Regional, Dee Events Center, Ogden, UT

Primary Starters
 F-Lamond Murray, 6-7, Jr., 24.3
 F-Michael Stewart, 6-10, Fr., 3.7
 C-Ryan Jamison, 6-11, Jr., 7.5
 G-Jason Kidd, 6-4, So., 16.7
 G-Monty Buckley, 6-6, Jr., 12.8

**1994-95
 (13-14, 5-13/T8th Pac-10)
 Head Coach: Todd Bozeman**

	CAL	OPP		
N26	82	Texas Southern.....	69	W+
N29	69	at N. Arizona.....	66	W+
D3	85	Pacific.....	66	W+
D5	93	San Francisco#.....	59	W+
D17	82	Minnesota#.....	75	W+
D21	89	at Cincinnati (24/13).....	76	W+
D28	79	Columbia* (14/X).....	43	W+
D29	73	Alabama* (OT) (14/X).....	76	L
J5	71	at Washington St. (17/X).....	83	L
J7	84	at Washington (17/X).....	76	W+
J12	86	Arizona (20/13).....	99	L
J14	68	Arizona State# (20/12).....	73	L
J19	73	Stanford (X/21).....	78	L
J22	76	at CS Northridge.....	65	W+
J26	76	at USC.....	58	W+
J28	100	at UCLA (X/4).....	93	W+
F2	67	Oregon State.....	76	L
F4	86	Oregon# (X/22).....	94	L
F9	81	at Arizona State (X/14).....	100	L
F12	74	at Arizona (X/9).....	72	W+
F15	70	at Stanford (X/17).....	83	L
F23	88	UCLA (X/2).....	104	L
F25	95	USC.....	74	W+
M2	82	at Oregon.....	95	L
M4	67	at Oregon State.....	83	L
M9	73	Washington# (OT).....	74	L
M11	89	Washington State.....	92	L

at Oakland Coliseum Arena
 * Otis Spunkmeyer Classic, Oakland Coliseum Arena
 + games later forfeited by Cal for use of ineligible player
Primary Starters
 F-Monty Buckley, 6-6, Sr., 16.1
 F-Tremaine Fowlkes, 6-7, Fr., 13.4
 C-Michael Stewart, 6-10, So., 3.9
 G-Anwar McQueen, 6-1, So., 4.2
 G-Jelani Gardner, 6-6, Fr., 10.7

**1995-96
 (17-11, 11-7/4th Pac-10)
 Head Coach: Todd Bozeman**

	CAL	OPP		
N25111	Northern Arizona.....	83	W+	
N29112	at Texas Southern.....	73	W+	
D5	83	at San Francisco.....	70	W+
D16	70	at Minnesota.....	67	W+
D20	70	Cincinnati# (24/9).....	77	L
D23	69	Illinois^ (24/14).....	83	L
D28	75	Holy Cross*.....	64	W+
D29	58	Kansas State*.....	65	L
J4	99	Arizona# (X/18).....	75	W+
J6	97	Arizona State#.....	82	W+
J11	63	at USC.....	60	W+
J13	73	at UCLA (X/17).....	93	L
J18	70	Oregon State.....	52	W+
J20	97	Oregon.....	72	W+
J25	87	at Washington St. (25/X).....	79	W
J27	69	at Washington (25/X).....	71	L
J31	79	at Stanford.....	93	L
F4	62	DePaul%.....	59	W+
F8	65	UCLA# (X/17).....	73	L
F10	85	USC.....	69	W+
F15	58	at Oregon.....	60	L
F17	57	at Oregon State.....	51	W+
F22	67	Washington.....	56	W
F24	71	Washington State.....	67	W+
M3	85	Stanford (X/25).....	69	W+
M7	53	at Arizona State.....	56	L
M9	68	at Arizona (X/11).....	71	L
M14	64	Iowa State! (X/17).....	75	L=

at Oakland Coliseum Arena
 ^ at United Center, Chicago, IL
 * Otis Spunkmeyer Classic, Oakland Coliseum Arena
 % at Bay Area Classic, San Jose Arena
 ! at NCAA Midwest Regional, Reunion Arena, Dallas, TX
 + games later forfeited by Cal for use of ineligible player
 = game later vacated for use of ineligible player
Primary Starters
 F-Sharief Abdur-Rahim, 6-10, Fr., 21.1
 F-Tony Gonzalez, 6-6, So., 5.3
 G-Randy Duck, 6-2, Jr., 9.1
 G-Ed Gray, 6-3, Jr., 15.6
 G-Anwar McQueen, 6-1, Jr., 3.3



BEN BRAUN
 1996-PRESENT
 95-61 (.609)

**1996-97
 (23-9, 12-6/T2nd Pac-10)
 Head Coach: Ben Braun**

	CAL	OPP		
N25	75	Iowa# (X/25).....	59	W
N26	67	Kansas# (X/2).....	85	L
N27	59	Massachusetts# (X/15).....	55	W

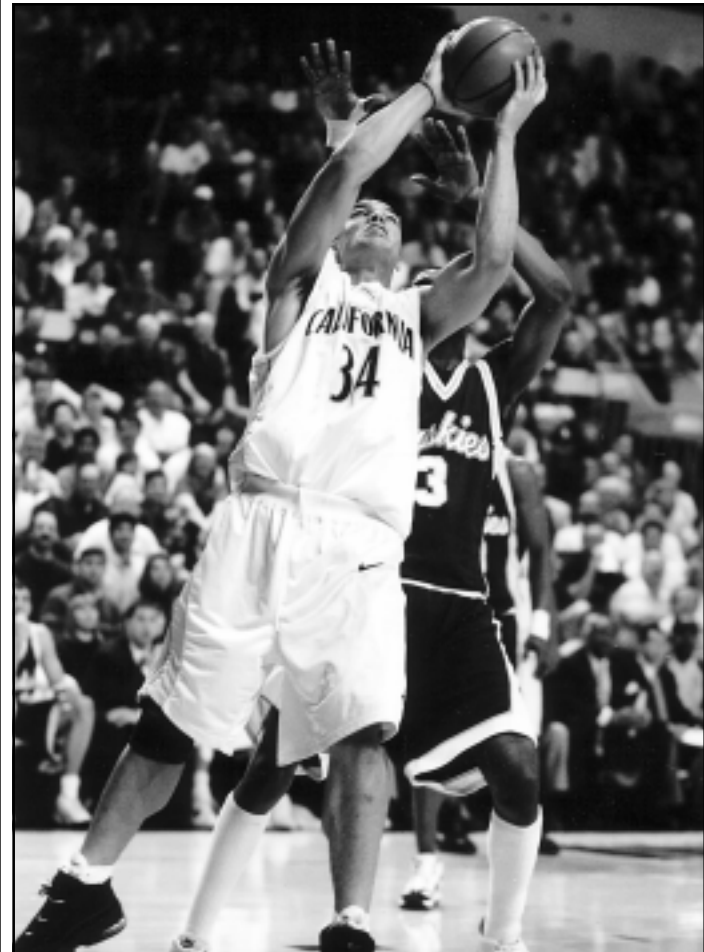
N30	97	Texas Southern.....	60	W
D3	89	Illinois (2OT).....	88	W
D8	64	Maryland+.....	80	L
D9	78	Mississippi State+.....	45	W
D20	76	Penn State^.....	63	W
D23	78	San Francisco.....	63	W
D28	86	Howard=.....	61	W
D29	77	Cal Poly SLO=.....	59	W
J2	80	at Arizona (X/9).....	81	L
J4	60	at Arizona State.....	64	L
J9	83	USC*.....	71	W
J11	56	UCLA*.....	64	L
J16	80	at Oregon State.....	70	W
J18	73	at Oregon (X/24).....	62	W
J23	77	Washington State (2OT).....	75	W
J25	80	Washington.....	52	W
J29	70	Stanford (X/15).....	64	W
F6	71	at UCLA.....	68	W
F8	85	at USC.....	93	L
F13	73	Oregon.....	66	W
F15	90	Oregon State.....	68	W
F20	78	at Washington (25/X).....	67	W
F22	87	at Washington State (25/X)89 L		
M1	63	at Stanford (X/25).....	73	L
M6	84	Arizona State.....	66	W
M8	79	Arizona* (X/12).....	77	W
M13	55	Princeton!.....	52	W
M15	75	Villanova! (X/20).....	68	W
M21	57	North Carolina@ (X/4).....	63	L

at Maui Invitational, Lahaina, HI
 + at Franklin National Bank Classic, US Air Arena, Landover, MD
 ^ at Jimmy V Classic, Continental Airlines Arena, East Rutherford, NJ
 = Golden Bear Classic

* at Cow Palace, San Francisco, CA
 ! at NCAA East Regional, Joel Coliseum, Winston-Salem, NC
 @ at NCAA East Regional, Carrier Dome, Syracuse, NY
Primary Starters
 F-Alfred Grigsby, 6-9, Sr., 7.2
 C-Michael Stewart, 6-10, Sr., 6.3
 G-Ed Gray, 6-3, Sr., 24.8
 G-Randy Duck, 6-2, Sr., 12.3
 G-Prentice McGruder, 6-3, Sr., 5.1

**1997-98
 (12-15, 8-10 Pac-10)
 Head Coach: Ben Braun**

	CAL	OPP		
N22	47	at North Carolina (X/4).....	71	L
N29	61	St. Mary's*.....	64	L
D2	50	at San Francisco.....	59	L
D9	51	at Houston.....	54	L
D18	74	Portland State*.....	61	W
D22	68	Brigham Young#.....	64	W
D28	75	New Hampshire!.....	67	W
D29	66	Va. Commonwealth!.....	57	W
J3	59	at Oregon.....	66	L
J5	84	at Oregon State.....	70	W
J10	74	at Stanford (X/7).....	84	L
J15	73	UCLA* (X/18).....	74	L
J17	92	USC*.....	82	W
J22	84	at Washington (OT).....	86	L
J24	86	at Washington State.....	75	W
J29	82	Arizona State*.....	77	W
J31	57	Arizona* (X/6).....	70	L
F4	72	Stanford* (X/9).....	74	L



Tony Gonzalez helped Cal to the 1997 NCAA Sweet 16.





F7 63 at Rhode Island^ 72 L
 F12 73 at USC 43 W
 F14 84 at UCLA (X/9) 87 L
 F19 69 Washington State* 60 W
 F21 84 Washington* 67 W
 F26 73 at Arizona (X/2) 76 L
 F28 80 at Arizona State 99 L
 M5 43 Oregon State* 46 L
 M7 75 Oregon* 71 W
 * at New Arena in Oakland
 ! Golden Bear Classic, Oakland, CA
 # at Pete Newell Challenge, Oakland, CA
 ^ at Providence, RI
Primary Starters
 F-Sean Marks, 6-11, Sr., 9.8
 F-Sean Lampley, 6-7, Fr., 8.4
 C-Francisco Elson, 7-0, Jr., 5.0
 G-Geno Carlisle, 6-3, Jr., 17.9
 G-Thomas Kilgore, 6-2, Jr., 12.9

1998-99
(22-11, 8-10/T5th Pac-10)
Head Coach: Ben Braun

CAL	OPP
N15 71 at Hawaii 60 W	
N25 94 Eastern Washington* 63 W	
N28 72 at DePaul 75 L	
D3 87 Houston* 72 W	
D5 71 Rhode Island* 64 W	
D7 58 Coppin State* 56 W	
D19 71 at Brigham Young 70 W	
D21 84 Eastern Kentucky= 49 W	
D22 94 SW Louisiana= 65 W	
D29 78 North Carolina# (X/9) 71 W	
J2 69 Oregon* (OT) 71 L	
J4 54 Oregon State* (25/X) 52 W	
J9 62 at Stanford (25/4) 71 L	
J14 61 at UCLA (X/10) 72 L	
J16 89 at USC 75 W	
J21 73 Washington* 87 L	
J23 75 Washington State* 68 W	
J28 66 at Arizona State 69 L	
J30 74 at Arizona (X/13) 91 L	
F3 55 Stanford* (X/4) 57 L	
F11 58 USC* 55 W	
F13 85 UCLA* (X/9) 69 W	
F18 73 at Washington State 73 L	
F20 61 at Washington 86 L	
F25 89 Arizona* (X/7) 76 W	
F27 78 Arizona State* 73 W	
M4 68 at Oregon State 61 W	
M6 82 at Oregon 93 L	
M10 79 Fresno State+ 71 W	
M16 58 at DePaul^ 57 W	
M18 71 Colorado State+ 62 W	
M23 85 vs. Oregon! 69 W	
M25 61 vs. Clemson! 60 W	

* at New Arena in Oakland
 = Golden Bear Classic, Oakland, CA
 # at Pete Newell Challenge, Oakland, CA
 + National Invitation Tournament, Oakland, CA
 ^ at National Invitation Tournament, Rosemont Horizon, Rosemont, IL
 ! at National Invitation Tournament, Madison Square Garden, New York, NY
Primary Starters
 F-Sean Lampley, 6-7, So., 12.4
 F-Mike Gill, 6-6, Sr., 10.3
 C-Francisco Elson, 7-0, Sr., 5.7
 G-Geno Carlisle, 6-3, Sr., 15.9
 G-Thomas Kilgore, 6-2, Sr., 14.2

1999-2000
(18-15, 7-11/7th Pac-10)
Head Coach: Ben Braun

CAL	OPP
N18 91 vs. TCU* 83 W	
N20 95 vs. Houston* 70 W	
N21 58 vs. Oklahoma* 75 L	
N27 76 Pacific 72 W	
N29 68 Hofstra 61 W	
D4 62 at Colorado 80 L	
D7 67 San Jose State 62 W	
D18 88 UC Irvine 61 W	
D21 72 vs. Gonzaga+ (X/22) 64 W	
D28 76 Boston Univ.# 45 W	
D29 71 Pennsylvania# 74 L	
J2 95 Davidson 87 W	
J6 61 Arizona (X/5) 65 L	
J8 108 Arizona State (2OT) 111 L	
J13 68 at Oregon 83 L	
J15 71 at Oregon State 65 W	
J22 70 Stanford (X/3) 81 L	
J27 80 Washington State 46 W	
J29 52 Washington 54 L	
F3 66 at USC 62 W	
F5 73 at UCLA 70 W	
F10 70 Oregon State 68 W	
F12 60 Oregon (X/24) 64 L	
F19 50 at Stanford (X/2) 101 L	
F24 75 at Washington 64 W	
F26 78 at Washington State (OT) 81 L	
M2 62 UCLA 83 L	
M4 86 USC 73 W	
M9 76 at Arizona State 85 L	
M11 61 at Arizona (X/9) 70 L	
M15 70 Long Beach State^ 66 W	
M21 60 Georgetown^ 49 W	
M24 59 vs. Wake Forest= 76 L	

* at Top of the World Classic, Fairbanks, AK
 + at Pete Newell Challenge, Oakland, CA
 # Golden Bear Classic, Berkeley, CA
 ^ National Invitation Tournament, Berkeley, CA
 = at National Invitation Tournament, Greensboro Coliseum, Greensboro, NC
Primary Starters
 F-Sean Lampley, 6-7, Jr, 16.6
 F-Ryan Forehan-Kelly, 6-5, So., 3.8
 C-Solomon Hughes, 6-11, So., 5.1
 G-Shantay Legans, 5-10, Fr., 9.4
 G-Donte Smith, 6-2, Fr., 6.2

2000-01
(20-11, 11-7/T4th Pac-10)
Head Coach: Ben Braun

CAL	OPP
N13 83 Mississippi State* (OT) .. 76 W	
N15 54 at Texas* 57 L	
N29 66 at Saint Louis 88 L	
D2 52 at UC Irvine 56 L	
D5 62 Cleveland State 54 W	
D9 75 Colorado 63 W	
D11 95 Albany 61 W	
D21 85 vs. Georgia+ 64 W	
D23 75 Coppin State 59 W	
D29 76 Yale# 62 W	
D30 81 LaSalle# 59 W	
J4 75 at Arizona (X/16) 78 L	
J6 82 at Arizona State 67 W	
J11 78 Oregon 62 W	
J13 81 Oregon State 67 W	
J17 58 at Stanford (X/1) 84 L	
J20 79 South Florida 69 W	
J25 75 at Washington State (OT) 71 W	
J27 79 at Washington 64 W	
F1 92 UCLA 63 W	
F3 66 USC (X/21) 80 L	
F8 72 at Oregon State (OT) 69 W	
F10 65 at Oregon 56 W	
F17 56 Stanford (X/2) 88 L	
F22 82 Washington 66 W	
F24 84 Washington State 65 W	

M1 75 at UCLA (X/12) 79 L
 M3 69 at USC 74 L
 M8 86 Arizona State 67 W
 M10 76 Arizona (X/8) 78 L
 M16 70 vs. Fresno State^ 82 L
 * Preseason NIT
 + at Pete Newell Challenge, Oakland, CA
 # Golden Bear Classic, Berkeley, CA
 ^ at NCAA South Regional, The Pyramid, Memphis, TN
Primary Starters
 F-Sean Lampley, 6-7, Sr., 19.5
 F-Joe Shipp, 6-5, So., 8.4
 C-Solomon Hughes, 6-11, Jr., 8.2
 G-Shantay Legans, 5-10, So., 9.5
 G-Brian Wethers, 6-5, So., 8.5

2001-02
(23-9, 12-6/T2nd Pac-10)
Head Coach: Ben Braun

CAL	OPP
N15 70 Princeton* 58 W	
N16 56 E. Washington* 27 W	
N20 67 Santa Clara 60 W	
N28 71 New Mexico 62 W	
D1 59 at South Florida 79 L	
D6 88 Saint Louis 63 W	
D11 97 Fresno State 75 W	
D21 78 Mount St. Mary's 50 W	
D28 69 Harvard# 54 W	
D29 76 Penn State# 73 W	
J4 62 at Stanford (X/12) 82 L	

J6 68 Stanford (X/12) 54 W
 J10 72 at Oregon 76 L
 J12 61 at Oregon State 53 W
 J17 62 Washington 50 W
 J19 90 Washington State 57 W
 J24 92 at USC (OT) (X/23) 91 W
 J26 57 at UCLA (X/13) 64 L
 J31 58 Arizona (X/19) 68 L
 F2 67 Arizona State 59 W
 F7 73 Oregon State 58 W
 F9 107 Oregon (2OT) (X/13) 103 W
 F14 77 at Washington State 56 W
 F16 60 at Washington 75 L
 F21 69 UCLA (X/25) 51 W
 F23 83 USC (X/20) 64 W
 F28 91 at Arizona State (21/X) 80 W
 M2 53 at Arizona (21/14) 99 L
 M7 67 vs. UCLA+ (25/X) 61 W
 M8 78 vs. Arizona+ (25/15) 90 L
 M15 82 vs. Pennsylvania^ 75 W
 M17 50 vs. Pittsburgh^ 63 L
 * BCA Classic, Berkeley, CA
 # Golden Bear Classic, Berkeley, CA
 + at Pac-10 Tournament, Staples Center, Los Angeles, CA
 ^ at NCAA South Regional, Mellon Arena, Pittsburgh, PA
Primary Starters
 F-Jamal Sampson, 6-11, Fr., 6.4
 F-Joe Shipp, 6-5, Jr., 14.8
 C-Solomon Hughes, 6-11, Sr., 7.7
 G-Shantay Legans, 5-10, Jr., 8.1
 G-Brian Wethers, 6-5, Jr., 10.3



Sean Marks was Cal's lone senior in 1997-98.